

THE RAM'S HORN

OFFICIAL PUBLICATION OF THE ARIZONA DESERT BIGHORN SHEEP SOCIETY, INC.
A NON-PROFIT, TAX EXEMPT CORPORATION

Vol. 15

December 1981

No. 6



First 1982 Project Is Just Around the Corner

This year the Foundation for North American Wild Sheep will again provide the funds for a water development project in Arizona. It will be the first project of the year (January 8, 9, 10) and will be held in the Big Horn Mountains north of Big Horn Peak. The development will include a masonry dam, two diversion dams and a shade. The existing pothole is 5 feet deep with a 12 foot radius. We will construct a 3½ by 22 foot dam to raise the storage capacity to 8½ feet. With the addition of the shade, sheep will have a year-round water supply. There will be two diversion dams to direct the water flow. These will have a combined length of 60 feet. Filling the diversion dams will be easy as there are ample rocks in the wash.

This project takes on a special meaning when you consider that the CAP will pass very close to the Big Horns. If water is

not developed now, and the sheep don't become accustomed to utilizing the water, they will attempt to use the CAP water and that will be their last drink.

The Foundation will again pay for all the materials and chopper time along with helping develop the water site. All of the members of the Foundation share our concern for the sheep, and individually, as we learned from experiences last year, they are all very good people. Approximately fifty Foundation members were present last year. Some came from as far away as Alaska, Canada and the East coast. They all had interesting experiences to share concerning their sheep hunts and this made for a very interesting campfire.

Everyone enjoyed themselves last year, so make your plans now to attend.

See you at the first project!

Foundation Funds Another Water Hole Project



This will be the site of the January 1982 Project in the Bighorns.

Cover Picture



Today we usually move the material to the work site by chopper at considerable expense to the agencies involved. However, at Holly Springs, the U.S. Army donated the chopper time. That is an example of the cooperation that exists between the military and the many agencies which support the A.D.B.S.S.

This spring development was not large in terms of water storage but the materials necessary to build the non-indigenous species fence and shade were enormous. Holly Springs would not exist today if the material had not been flown to the site.

The Society owes the Army a great deal of thanks for their donation. We wish to express our appreciation to the Army for their generous support at Holly Springs.

THE RAM'S HORN

P.O. Box 5241, Phoenix, Arizona 85010 is the official publication of the Arizona Bighorn Society, Inc., and is published quarterly for the Society's membership. Current Membership: 700.

OFFICERS

Tom Boggess, President	997-1161
352 W. Wagon Wheel Dr., Phoenix, AZ 85021	
Don Johnson, Vice President	943-9587
1036 E. Myrtle, Phoenix, AZ 85020	
Dick Krause, Secretary	274-7447
1120 W. Edgemont, Phoenix, AZ 85007	
Bill Hook, Treasurer	945-7379
3202 N. 83rd Street, Scottsdale, AZ 85251	
Dan Priest, Editor	973-1925
3837 W. Townley, Phoenix, AZ 85021	
Administrative Offices	274-9069

Make Plans Now For the 1982 Projects

We will develop six new water sites for 1982. Four will be with the Arizona Game and Fish Department, two will be with the U.S. Fish and Wildlife Service. In January of 1982 we will again work with the Foundation for North American Wild Sheep. The February 19-21 project in the Mohawks promises to be a special development. The techniques used will be completely new to the Society and will expand our ability to develop waterholes in areas where we cannot presently develop sites. The planning for the other projects has not yet been finalized, but they will all be major developments with year round water storage.

This past year the Society received considerable publicity and has accepted a larger role by funding the sheep transplant. Our relationship with the various agencies has never been better and this year the Society needs your support and participation more than ever. I urge everyone to mark their calendars now and plan to attend all six projects.

January 8, 9, 10

Bighorn Mountains — Foundation for North American Wild Sheep

January 29, 30, 31

U.S. Fish and Wildlife

February 19, 20, 21

Mohawk Mountains

March 19, 20, 21

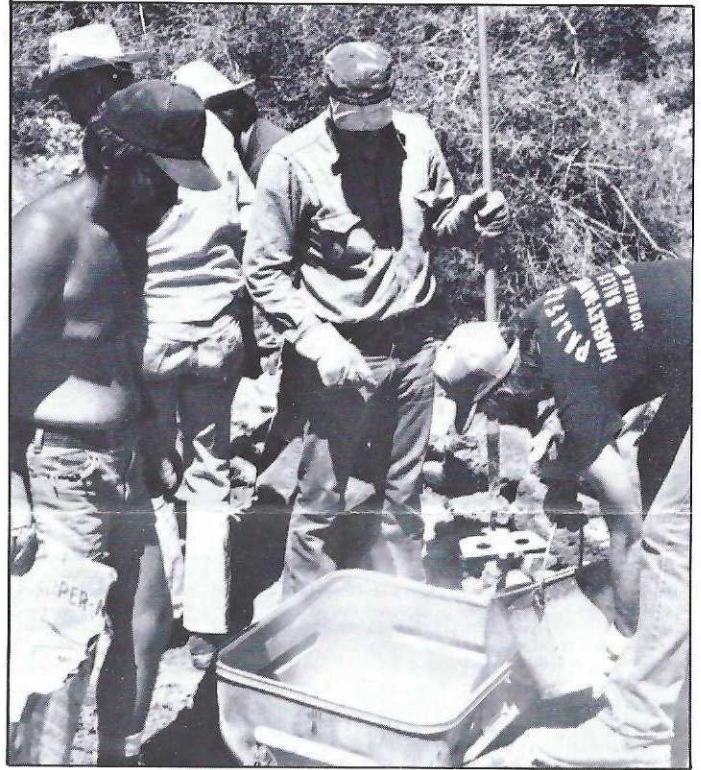
Silverbell Mountains

April 9, 10, 11

Gila Mountains

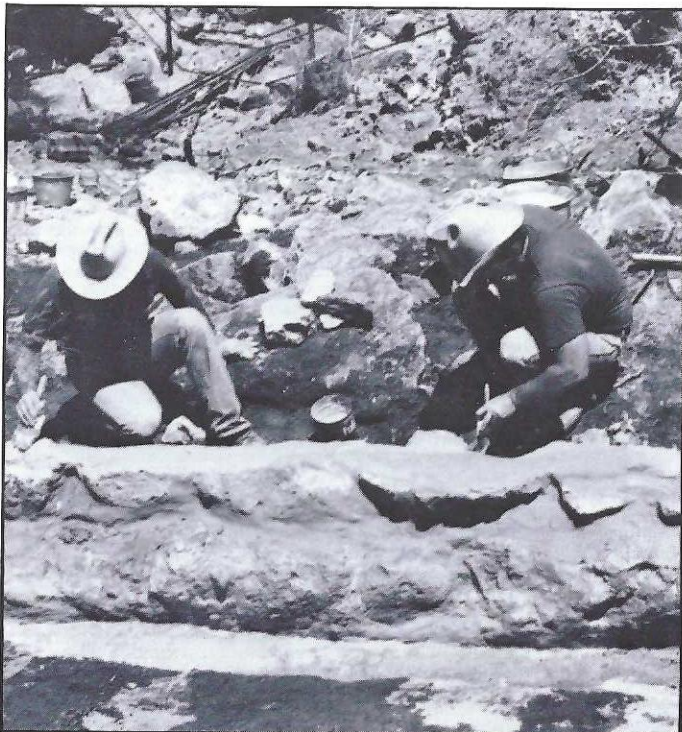
May 21, 22, 23

U.S. Fish and Wildlife

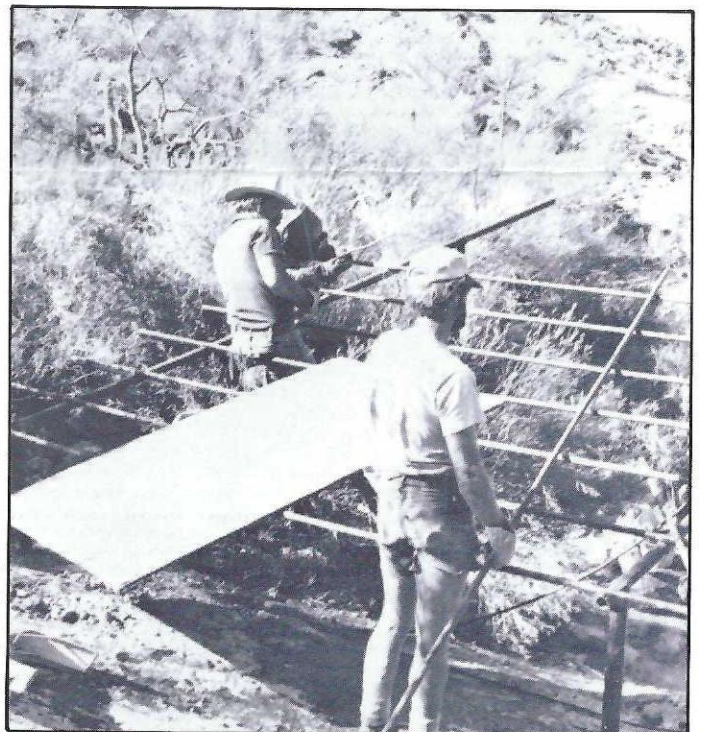


Mortor Mixers

**Thanks much to Joe Bill Pickrell for project articles
and pictures throughout the year.**



The fine art of dam building.

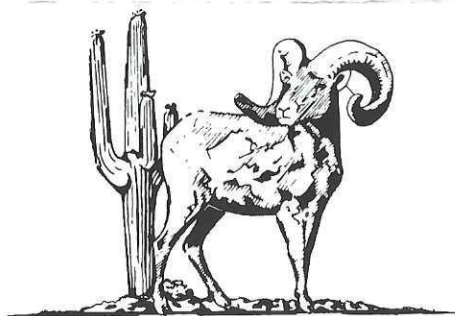


Construction of waterhole shade.

1981 Clinic Summary

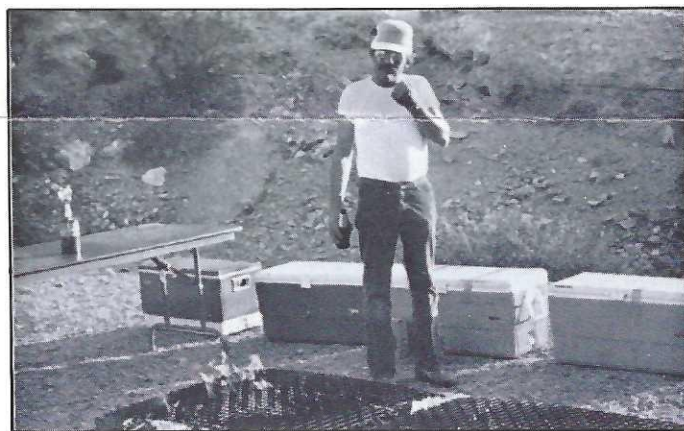
Much thanks goes to all of you Society members and Board members for another excellent clinic. The bar-b-que on Friday night was held at Squaw Peak Park and it was a perfect place. The weather couldn't have been better and there was an excellent turnout. Then on Saturday the clinic started at 9:00 a.m. and again, the Greenway Sheraton turned out to be the perfect place. The room size and temperature were ideal. Many of us remember the clinic days at the rifle range and Sheriff's Posse building and both of those places got just a little warm inside during the afternoon. The displays and speakers seem to get better every year, and to top it off, the clinic was over by 3:00 p.m. — the designated time. Harry Hussey, Program Chairman, did a fine job. From all the Society members — thanks!

(There will be pictures and a better description of what took place at the clinic in the next Ram's Horn.)



Society In Need of Donated Meat

Plans are now under way for the upcoming waterhole projects. A lot of planning goes into the Saturday evening meal prepared by the Sheep Society and that's where you come in. If anyone out there has any meat they would like to donate, it will be put to good use. Any amount and any kind of meat would be appreciated. Our cooks for the next year will be Tim Blank and Alex Holgin. As many of you know from last year, these two guys do a lot of work and really are good cooks so you know your meat will be in good hands. Anyone with a donation please contact the Society office at 274-9069.



The Following Items Are Offered For Sale In Consideration Of Minimum Donations As Specified:

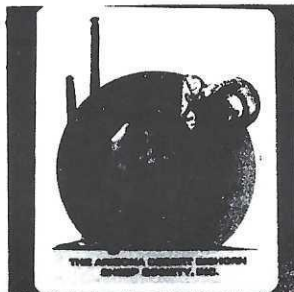


Colorful Blue & Gold Patch

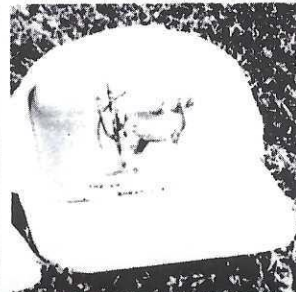


Tie Tack. Sterling Silver or 14K Gold Replica of Desert Bighorn Sheep.

Arizona
Desert
Bighorn
Sheep
Society



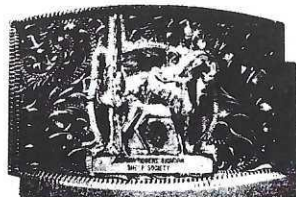
Colorful 6"x4" ADBSS Decal



Lightweight Outdoor Caps. Blue & White, Yellow & White

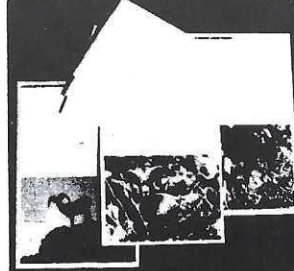


T-Shirts in Blue, Tan or Yellow with Society Emblem. (S, M, L or XL)



A limited edition, individually numbered, hand finished bronze logo on silver. 3 1/2"x 2 1/2".

Make checks payable to A.D.B.S.S. P.O. Box 5241 Phoenix, AZ 85010



Note cards and envelopes reflecting a variety of super sheep pictures.



Guide — A collection of facts and articles by knowledgeable sheep hunters.

FORWARD ORDER TO:

Name _____
Address _____
City _____
State, Zip _____

ORDER FORM

Patch	\$1.50
Decal	1.50
T-Shirt	6.00
Buckle	31.00
Hunter's Guide	1.00
Caps	5.00
Stationery - 14-pak	2.50
Stationery - 8-pak	1.50

Postage prices are as follows:

Cap — 1.00 ea.
Buckle — 1.25 ea.
T-Shirt — 1.75 ea.
All other items are .75 ea.

CAPS: Specify color and size.

T-SHIRTS: Specify size, style — emblem front or back, color.

Rocky Mountain Bighorn in Arizona? Yes!

In 1964-1966 the New Mexico Game and Fish Department started a Rocky Mountain Bighorn release program in the area of Glenwood, New Mexico. The first release involved five rams and thirteen ewes. Another release, at the same but in a different location northeast of Glenwood, consisted of two rams and eight ewes. The sheep were obtained from Banff National Park, Canada. Today, from these twenty-eight sheep, the population estimate for New Mexico's Glenwood herd is about 175. As a result of this expanding New Mexico herd, Arizona now has Rocky Mountain bighorns within its boundaries. The population estimate of Arizona animals from this Glenwood herd is thirty-seven. With Arizona having a population of migrated Rocky Mountain bighorn, the Arizona Game and Fish Department decided to make an introduction of bighorns further north of this Glenwood herd. So in May, 1979, eight sheep were obtained from Rocky Mountain National Park, Colorado. These sheep included two rams and six ewes. The

rams were a yearling and a lamb. Then on March 19, 1980 twelve sheep were obtained from Tarryall, Colorado including five rams and seven ewes. As a result of this transplant and the Glenwood herd, Arizona has two herds of Rocky Mountain bighorn. The Glenwood herd is in the San Francisco River area north of Clifton and the other herd, known as the Upper Blue River herd, is in the area around Beaverhead.

During the summer of 1980 all the Upper Blue River herd appeared to migrate upward to the west into the river canyons of Black River and its forks. Only one-half of the sheep migrated in a similar fashion in 1981. One ewe from the Blue River herd moved onto the San Carlos Indian Reservation where she has remained until present. Two other sheep are with her, but it is not known if they are Glenwood sheep or her own lambs or other Blue River sheep. The migration of the Glenwood herd seems to be back in New Mexico, but there are reports of some sheep that reside within Arizona boundaries all year long. Hopefully, with as much movement taking place with these two herds, they will overlap, interjecting some needed new blood.

The potential as far as eastern Arizona sheep range is very good. The Blue River area and the San Francisco Canyon area westward into the Turtle and Gila Mountains are good

(Cont'd on next page)



Rocky Mountain Bighorn (*Cont'd*)

potential areas for Rocky Mountain bighorn. If our Arizona herds do as good as the New Mexico herd we could easily have a herd of Rocky Mountain bighorns in eastern Arizona in excess of 150 animals in the years to come.

Notes of Interest

* Nineteen Rocky Mountain Bighorn seen in the Upper Blue during deer surveys — January, 1981.

* Numerous reports of sheep sightings have been reported.

* Helicopter sheep surveys were flown in the San Francisco and Eagle Creek areas in January and May and an additional horseback survey was conducted the latter part of June. Results were: January — no sheep seen; May — five rams, nine ewes and three lambs seen; June — eight rams seen (five may have been duplicates).

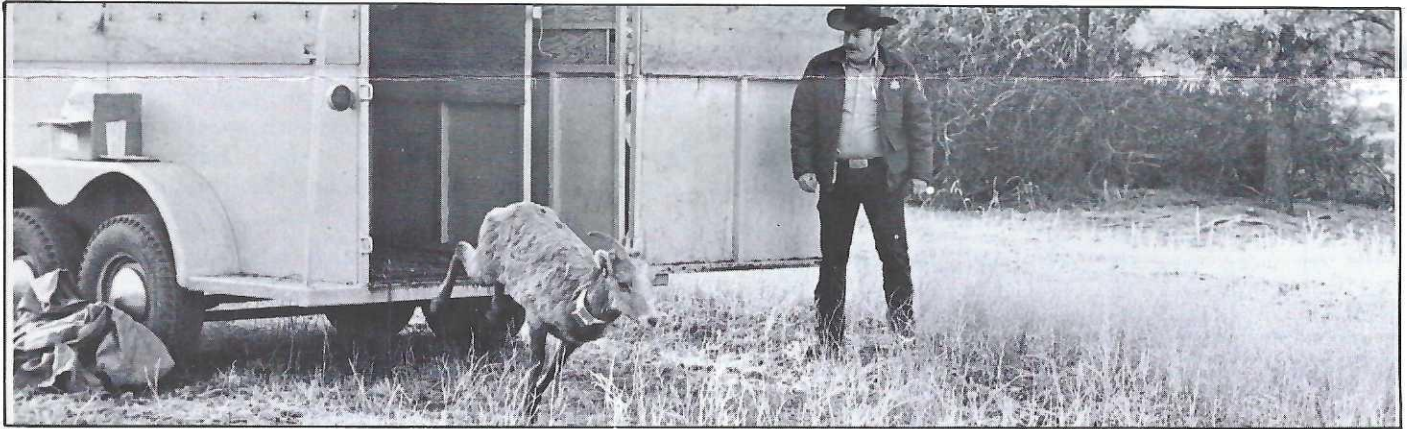
* One yearling ram was illegally shot during the 1980 general deer season about ten miles south of Clifton.

* Lamb survival has been noted indicating an upward trend in the Arizona herds.

* Eight sheep appeared on the Ft. Apache Indian reservation during the summer of 1980.

* New Mexico has had a sheep hunt in the past years for the transplanted Glenwood herd. This year New Mexico issued six permits in the Glenwood area.

Much thanks goes to Jack O'Neil of the Arizona Game and Fish Department for his information on this subject. Also, thanks goes to Dave Daughtry of the Arizona Game and Fish Department for the transplant picture.



Transplanting sheep

1982 Board

A new year means a new Board. Below is a list of the new Board members and it looks like we should have another good year within the Sheep Society. One reason for that is the Society's new President, Don Johnson. All of the board members and society members who attend the Society's monthly meetings will tell you what a hard working guy Don Johnson is and there is no one who equals Don's concern for the Society and our state's bighorn sheep. Don came to Arizona in 1967 from New York state. Ten years later, in 1977, he came to a Society board meeting by invitation of Lyle Sietsema. Don was asked that same year to become secretary to fill in for a board member who, because of his work, could not continue to hold the position. Don jumped in and did an excellent job for the remaining year — so good, in fact, that that is what he did for the next three years of 1978, 1979, and 1980. In 1981 he was elected Vice-President. Don is married and has two boys, Eric and Michael, and his wife's name is Janet. He is part owner of Western Computing. He is an avid hunter as can be seen by the accompanying picture.

New Board Members:

President — Don Johnson
Vice-President — Harry Hussey
Past President — Tom Boggess
Secretary — Dan Priest
Treasurer — Bill Hook
Legislation — Joe Sheehy

By-Laws & Resolutions — Tom Pender
Programs — Bryan Wiley
Membership — Win Welch
Publicity — Louis Coor
Finance — James Fieldler, Jr.
Projects — Joe Bill Pickrell
Ram's Horn Editor — Harry VanderHoek



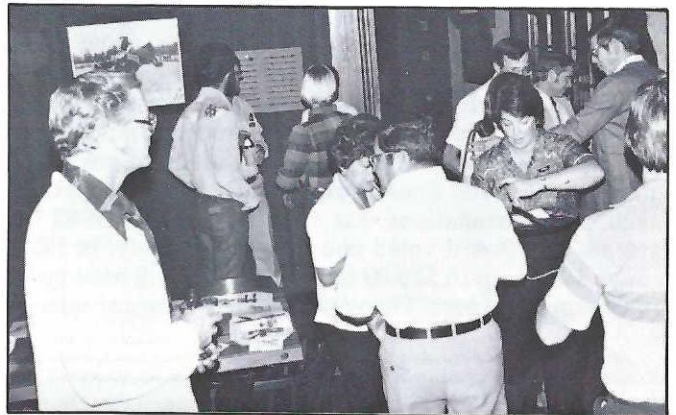
Don Johnson and Robbie Simpson. Don is the one on the left! This picture was taken during the recent antelope hunt. It's Robbie's antelope.

1981 Business Meeting Somewhat Different

Photos below by Lyle Sietsema



Normally the Sheep Society's annual business meeting has been held the morning before the hunters' clinic, but this year, in order to keep the clinic somewhat shorter, the business meeting was held on a different date. On Wednesday, September 23, 1981, the Society met at Monti's



at 19th Avenue and Cactus. There was a good turnout for the meeting and dinner. After dinner we were treated to an excellent presentation on sheep work by Dave Mclean, Assistant Chief Ranger for the Lake Mead National Recreation Area.

Lazarus Emergency Project

Earlier this summer, lower Lazarus Tank, a past Society waterhole project in the Plamosa Mountains, was discovered to have a low water level despite recent rains which had completely filled other catchments in surrounding areas. Dean Bowdoin discovered the condition on returning from a Nevada Sheep scouting trip. The ADBSS in conjunction with the Arizona Game and Fish Department grabbed the opportunity to repair possible leaks either in the dam or the natural solid rock pool behind it.

A group of twelve or thirteen people from the Arizona Game and Fish Department and Sheep Society members gathered in the summer heat to muck out several yards of silt and gravel to prepare the tank for filling cracks and sealing. All tools, buckets and sealants were packed in, and a very concentrated effort on the part of everyone present removed enough silt to increase the holding capacity of lower Lazarus Tank by several hundred gallons.

Several of the members drove to Triple-eye Tank, in the Eagletail mountains, after completing the Lazarus cleanout, and found the tank holding a good amount of water and in good condition.

Many past ADBSS water developments are probably in need of repairs or silt removal and anyone inspecting such a site can obtain a "Water Facility Inspection Report" form upon which all pertinent information concerning location, development condition, etc., can be logged. This form, returned to the ADBSS, will assist the Society in planning future emergency restoration projects like the Lazarus effort.

For more information contact the ADBSS Administration office at 49 East Thomas Road in Phoenix, or call 274-9069.

Courtesy Bryon Wiley



Audit Committee Requests Due Increase

As can be expected, the cost of keeping an organization together such as the Sheep Society goes up along with everything else. Mailing costs, for one thing, seem to keep jumping up every few months. Printing is another culprit. Weeks ago, the Society put together an Audit Committee so we would know exactly where we stand with our funds. (The Audit Committee has done an excellent job by the way.) One of their recommendations was that the dues for 1982 be increased. The Board voted and the rest is history. In 1982 the dues will go up to \$18.00 and the Society will need your support more than ever. Thanks so much for your consideration.

The Society is missing its projector screen. If anyone knows of its whereabouts please contact the Society offices.

ATTENTION

The Arizona Game and Fish Department was busy during November with several sheep transplants. The Department requested financial help from the Society for one of the transplants and the ADBSS Board of Directors approved \$26,000 to transplant sheep into the Redfield Canyon area of the Galiuro Mountains. This was an ambitious program for both the Department and the Society and the first time anywhere such a project has been financed by outside organizations.

As you know, the Department is facing a shrinking budget. If these positive programs are going to continue, the Department needs our support. We will be soliciting funds from members, individuals, and businesses. All the information will be in the mail very soon. If you are interested in sheep and desire to continue these transplant programs, now is the time to get involved. A little effort by everyone will guarantee that these programs will continue.

MEMBERSHIP INVITATION

Individuals who are interested in promoting the welfare of the Desert Bighorn Sheep and desire to affiliate with an organization dedicated to this purpose may do so by joining the Arizona Desert Bighorn Sheep Society, Inc.

The membership roster of the Society includes conservationists, sportsmen, professional wildlife managers, educators, biologists, photographers and just plain folks all interested in the Arizona Desert Bighorn Sheep.

The Society undertakes an annual program of several (usually 5) major habitat improvement construction projects in cooperation with and under the direction of the State and Federal agencies responsible for management of the Desert Bighorn Sheep.

One of the more important projects of the Society is the conduction of the annual Sheep Clinic training program.

In addition to projects, members of the Society participate in other conservation and game management activities; a special legislative committee of the Society closely watches legislation that may affect the sheep or its habitat and general welfare.

While the opportunities for active participation are numerous, such participation is not a prerequisite for membership. All interested persons are encouraged to join, the Society needs and welcomes your moral and financial support.

MEMBERSHIP APPLICATION

I hereby make application for membership in the Arizona Desert Bighorn Sheep Society, Inc., and enclose my membership donation. DONATIONS ARE TAX DEDUCTIBLE.

Annual Minimum Donation Is \$18.00

RENEWAL NEW MEMBER DATE _____

NAME _____ TEL. NO. _____

ADDRESS _____

CITY _____ STATE _____ ZIP _____

Make checks payable to Arizona Desert Bighorn Sheep Society, Inc.
P.O. BOX 5241 • PHOENIX, ARIZONA 85010

THE RAM'S HORN

P.O. BOX 5241
PHOENIX, ARIZONA 85010



BH000848A 8112 2422258
MATTHEW DOMINY
726 N WESTWOOD
MESA AZ 85201

ADDRESS CORRECTION REQUESTED