



THE RAM'S HORN

OFFICIAL PUBLICATION OF THE ARIZONA DESERT BIGHORN SHEEP SOCIETY, INC.
A NON-PROFIT, TAX EXEMPT CORPORATION

Volume 20

Fall '85

#3



Dollars for Sheep — See Article for Story

THE RAM'S HORN

P.O. Box 5241, Phoenix, Arizona 85010 is the official publication of the Arizona Desert Bighorn Sheep Society, Inc., and is published quarterly for the Society's membership. Current Membership: 800.

Arizona Desert Bighorn Sheep Society, Inc.

1985 OFFICERS & BOARD OF DIRECTORS

James Fiedler, Jr. **PRESIDENT** **H: 832-8489**
 910 S. 41st St. **O: 981-9400**
 Mesa, AZ 85206

Bill Hook .. **PAST PRESIDENT/G&F LIAISON** .. **H: 945-7379**
 3202 N. 83rd St. **O: 949-3474**
 Scottsdale, AZ 85251

Joe Bill Pickrell **VICE PRESIDENT** **H: 943-0454**
 P.O. Box 7612 **O: 269-7911**
 Phoenix, AZ 85011

Pete Cimellaro **SECRETARY** **H: 840-8749**
 2928 E. Washington **O: 275-5198**
 Phoenix, AZ 85034

Jim Svoboda **TREASURER** **H: 947-7933**
 4819 N. 82nd St. **O: 244-7411/244-7257**
 Scottsdale, AZ 85251

Paul Rускаup **MEMBERSHIP** **H: 992-0303**
 2273 E. Clinton St. **O: 863-5304**
 Phoenix, AZ 85028

Frank Tennant **PROJECTS** **H: 834-0926**
 2214 W. Del Oro Circle **O: 834-3600**
 Mesa, AZ 85202

Alex Holgin **PUBLICITY** **H: 839-1245**
 2063 E. Carson Dr. **O: 249-5824**
 Tempe, AZ 85282

Larry Heathington . **PROGRAMS/F&W LIAISON** . **H: 836-9386**
 Rt. 2, Box 367A
 Casa Grande, AZ 85222

Jim Marquardt **BY-LAWS/RESOLUTIONS** **H: 996-1997**
 10837 N. 38th Pl. **O: 992-7220**
 Phoenix, AZ

Paul Pavlich **RAM'S HORN** **H: 997-2146**
 1346 E. Townley Dr.
 Phoenix, AZ 85020

Tom Martin **FINANCE** **H: 581-2219**
 19634 N. 12th Pl. **O: 257-1434**
 Phoenix, AZ 85024

Pat Adams **ZOO** **O: 274-0383**
 3215 W. Meadowbrook
 Phoenix, AZ 85018

Louie Coor **LIBRARY** **H: 265-9121**
 2017 E. Lamar Rd. **O: 975-2270-99**
 Phoenix, AZ 85016

Dean Bowdoin **FOUNDATION** **H: 955-8636**
 5226 N. 33rd St. **O: 863-5362**
 Phoenix, AZ 85018

Steve Williams **LEGISLATION** **H: 257-1917**
 92 W. State Ave. **O: 255-4625**
 Phoenix, AZ 85021

Administrative Office **(602) 957-0773**
 3602 E. Campbell, Phoenix, AZ 85018

Executive Secretary, Marlana Mertz

LIFE MEMBERS:

Lee Arce	Arthur Pearce
James R. Barrow	R. Norman Pearce
Claude Evans	Jack Pinckney
Nicolas Franco	Art Porter
John Gillett	Catherine E. Tuft
Bob Gourley	Bryon Wiley
Alan Guenther	Greg Wiley
Dennis Hankerson	Martin F. Wood
Harvey Kadlec	Marvin Wood
Dan Nasca	W.T. Yoshimoto

SUSTAINING MEMBERS:

James DeForge
 Reinhart Fajen
 Drew Getgen
 Greg Pierce

1985 CALENDAR OF EVENTS

PROJECTS

Friday, September 27th	Steak Fry
Saturday, September 28th	Annual Hunter's Clinic
November 6, 1985	Annual Membership Meeting
December 6-22	Sheep Hunt

Board Meeting

The ADBSS Board Meetings are held on the 2nd Wednesday of each month. The meetings are open to all concerned members. Time of meeting: 7:30 p.m. to 9:30 or 10 p.m. For location, call President Jim Fiedler.

*Front cover photo credits:
 Cover photo courtesy of Danny Nasca*

WATER HOLE COUNT

On Friday, June 21st 1985, seven members of the Arizona Desert Bighorn Sheep Society left the Phoenix area to assist the management personnel of the Kofa National Wildlife Refuge with their annual summer Waterhole Count.

This count is generally held in the last week of June in an attempt to catch concentrations of sheep around permanent water sources after transient sources have dried up, while the summer rains have not yet begun. This count provides the Kofa management plan with needed information concerning lamb/ewe, yearling and ewe ratios and the general health of the sheep population.

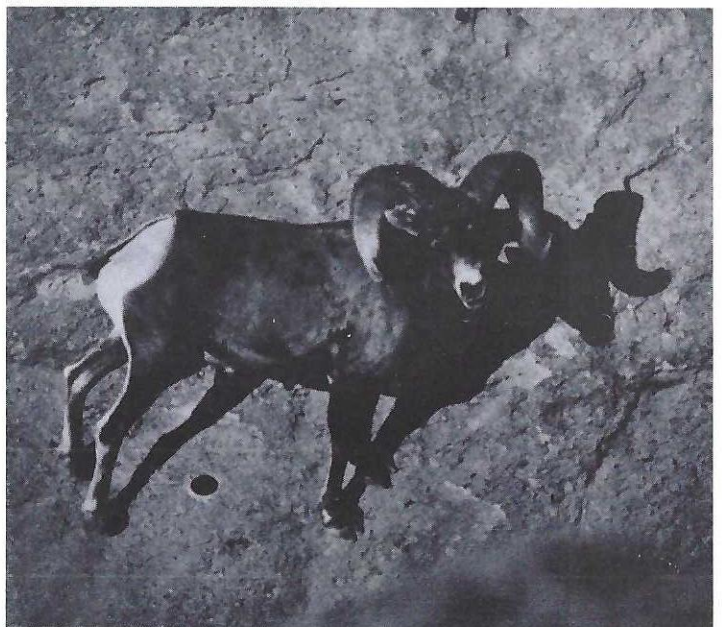
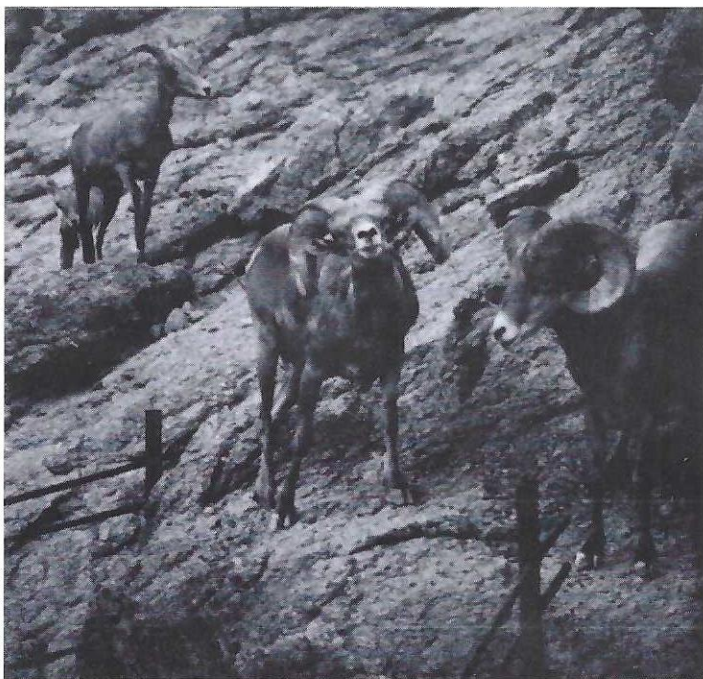
Persons participating in the count must be in their blinds prior to daylight each count day, and they generally get to leave well after dark. It makes for short nights and long hot days. But, those of us who make the count each year always say we're not going back, but are the first to sign up the next year.

It's an excellent opportunity to take pictures of rams and ewes in and around the waterholes as they interact with each other. On this years count a total of 65 sheep were observed by the 7 society members, and are broken down into the following categories:

Class 4 Rams-20, Class 3 Rams-17, Class 2 Rams-15, 10 Ewes, 1 Yearling, 2 Lambs

We would like to thank those members who participated this year, while soliciting new members to join us with next years count. See there I go again, signing up before it gets here after my promise not to go back into one of those sweat boxes.

Some of the specimens at the June 1985 Waterhole Count.



\$100,000 RAISED ON DESERT SHEEP TAGS

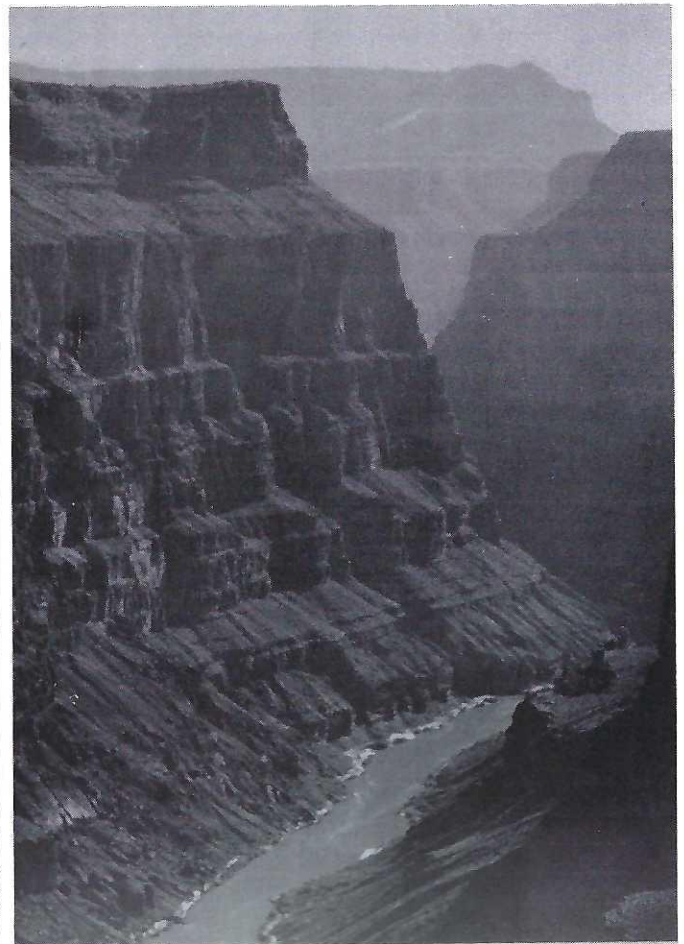
A total of \$100,000 has been raised for the Hualapai Conservation Fund on the six desert bighorn sheep tags that the Hualapai Reservation will be authorizing this year. In past years these six tags have been handled through the reservation wildlife department on a drawing basis, with the tag fee being \$2,000 each, for a total of \$12,000 annually since 1973.

The reservation, contracted this year through Adventure Hunts of 8808 N. Central, Suite 288, Phoenix, Arizona. Michael Bond of Adventure Hunts handled the sale of the six tags through a sealed bid auction system, and open sales with a minimum bid of \$15,000 being set. The high bidder for the six tags was Dr. Jack Frost of Anchorage, Alaska who bid \$19,100 for the right to hunt the Grand Canyon for a Desert Bighorn Sheep. The other tag holders are Perry Finger-Kingsville, Texas, Jim Voeller-Cheyene, Wyoming, Wayne

Taysom-Pocatello, Idaho, Steve Fennell-Athens, Georgia, and Al Means-Reno, Nevada.

The hunt is scheduled to take place in the month of October, with three individuals hunting from the first to the fifteenth and the second group starting on the fifteenth to the end of the month. As this hunt is actually within the confines of the Grand Canyon on the Hualapai Indian reservation, the hunters can look forward to spectacular scenery and a high degree of difficulty. The sheep on the reservation are located in two distinct areas: National, Mohawk and Prospect Canyons on the East side, and Quartermasters, Spencer, Jeffs, Hindu and other smaller canyons on the West side. Sand Tank Outfitters of Casa Grande, Arizona will be handling the ground operation portion of the hunt, and are in the process of scouting the reservation as well as training tribal members as guides.

Dr. Jack Frost of Anchorage, Alaska was the top bidder for six tags. This secured for him the right to hunt the Grand Canyon for Bighorn. Photos to the right and below show some of the terrain he and five others are likely to face within the boundaries of the Hualapai Indian Reservation.



LAKE MEAD CAPTURE & TRANSPLANT

On the weekend of July 13-15, a group of Society members and friends journeyed to Lake Mead to capture sheep for transplanting to Paria Canyon and Hack's Canyon. Most of the group arrived at the Gold Strike Inn early on Saturday afternoon. The balance of the day was spent reconnoitering the territory, including checking out boats provided by Bob Beaumont of the Callville Bay Resort and Marina. The Society owes Mr. Beaumont its gratitude for his generosity in furnishing four boats and motors for our use.

Saturday evening the group was briefed by members of the Game and Fish Department, principally Art Fuller, who outlined our responsibilities and made job assignments. At this meeting, we were advised that the Sheep Society contingent would be leaving early Sunday morning for Sidewinder Canyon and the first capture. We rendezvoused at the outer buoy at Callville Bay at 5:00 a.m. and set off across the windy Lake Mead for Sidewinder Canyon. Although some sheep were sighted in the area, none were under the net and none came under the net by 7:00 a.m. Accordingly, Art Fuller decided to leave a skeleton crew behind and proceed on to Fishfinder Canyon where another net had been set up. We were joined at Fishfinder Canyon by the rest of the contingent from Callville Bay. This time we were much more fortunate. There were sheep coming from almost every point of the compass except across the lake. When the appropriate number of animals were beneath the net, the net was blown and the work began. Nineteen sheep were transported from Fishfinder to Callville Bay.

On our arrival at Callville Bay, we discovered that the

skeleton crew at Sidewinder had captured 5 animals. Considering that there were only 7 people there, the capture of 5 animals is absolutely mind boggling.

When the sheep had been loaded on the truck for transport, we went back across Lake Mead to set up a net at Indian Canyon. The net at Fishfinder Canyon had been reset up prior to our departure.

Sunday was more of the same, with 12 animals being captured at Indian Canyon and an additional 3 animals being taken from Fishfinder. The total number of sheep transported was 39, of which 15 went to Paria Canyon and 2 dozen went to Hack's Canyon. During the capture proceedings, one ewe and one ram were released because it was determined that they were not suitable for transplant due to age.

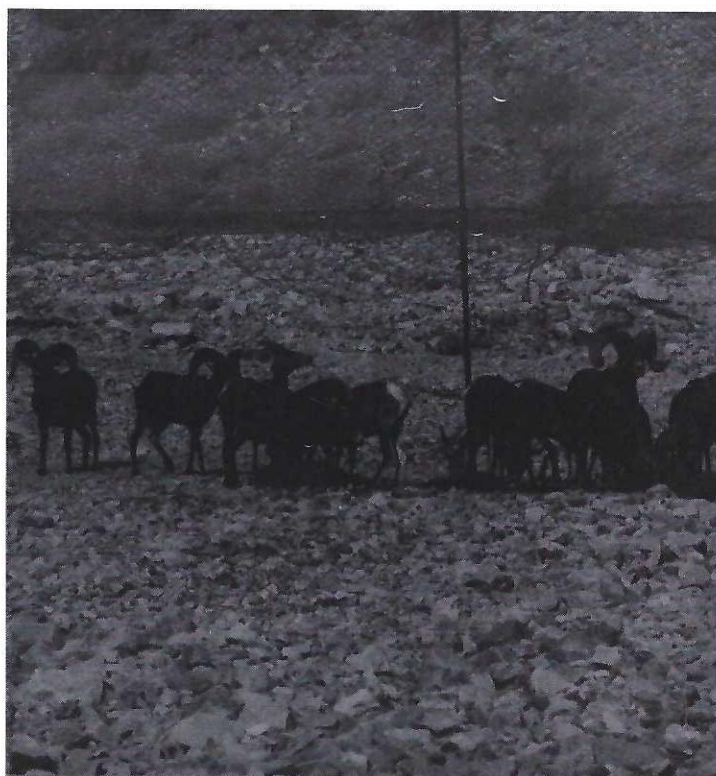
All in all, the capture went smoothly and the animals were in good condition when shipped. A special thanks should go to Tom Britt and Glen Dickens of Region Two as well as to Wes Martin and Art Fuller of Region Three for their hard work in coordinating the capture and transplant activities.

A list of the Society members and friends who participated follows:

Lindley Boggess	Bill Hook	Bill Schmaltz
Tom Boggess	Gilbert Hurley	Ryan Wampler
Cathy Cimellaro	Harry Hussey	Win Welch
Pete Cimellaro	Char Marquardt	George Welsh
Ronnie Clark	Jim Marquardt	Margaret Welsh
Vern Haugen	Robbie Robinson	Steve Williams
Larry Heathington		



"Got one!" at the Lake Mead capture.



As easy as catching butterflies — well almost!



When you are in the field, sometimes you have to improvise a blindfold. (Lake Mead Capture)



Now you have an idea how the Phoenix transit system got started. (Lake Mead Capture)



1985 HUNTERS CLINIC & STEAK FRY

The Annual Arizona Desert Bighorn Sheep Society Steak Fry will be held Friday night September 27th 1985 at the Los Lamitas area of South Mountain Park. This function will get underway at approximately 6:00 PM and will last until all the steak, beans, and consumptive beverages are gone. We will be hosting this years lucky Sheep tag recipients and there will be a large number of Arizona Game and Fish personnel along with Society members present. Plan on attending you don't want to miss the White Elephant sale or the conversation that takes place around the tables.

As in years past the Steak Fry is the preamble to the Hunters Clinic which is being held this year at the Fiesta Inn, 2100 South Priest Drive Tempe, Arizona starting at 9:00 AM on Saturday, September 28th. The clinic will run from 9:00 AM until 4:00

PM with a 90 minute break for lunch.

Arizona Game and Fish personnel from around the state will be present to discuss sheep in each region, while a number of long time society members will discuss topics ranging from How to Hunt Desert Sheep to Photography. There will even be a Ram judging contest to age and score 3 Rams with the winner receiving a Spotting Scope. The committee members are looking forward to a large turn-out and hope that you will be one of those attending both functions.

Please plan to attend . . . it should be fun and informative for everyone of all ages. If you have any questions please don't hesitate to call Marlana Mertz at the ADBSS office 957-0773 or Program Chairman Larry Heathington at 836-9386.

“BIGHORN SHEEP HABITAT DESTROYED? HARDLY”

Wildlife Management Unit 13B in the northwest corner of Arizona is known by few Arizonans, and is considered by many Utah residents to be part of their state. Regardless, the Arizona Game and Fish Department, with help from the Bureau of Land Management and the Arizona Desert Bighorn Sheep Society, has long worked to re-establish bighorn in two mountain ranges of this unit. The results and rewards are finally being seen.

The first transplant was made in 1979 from the Black Mountains. Two years later, two free-release transplants were made in conjunction with opening the enclosure.

Bighorn soon congregated in two areas — the Virgin River Gorge and Hatchet Canyon. The latter group shows high fidelity to one steep ridge, and seldom separates into smaller bands. The Virgin River Gorge bighorn are dispersed throughout the mountains surrounding the western half of the Gorge, and occasionally cross the river and freeway which bisect their range.

Reproduction has been consistently good over the last several years. Even after the winter drought of 1983-84, spring lamb production was 55 lambs: 100 ewes, and survival to October was an acceptable 31 lambs: 100 ewes. However, recruitment appears lower than expected. By now we could expect a 1:1 ratio of transplanted (marked) versus Virgin Mountain born bighorn (unmarked). Instead we found a 2:1 ratio during the October 1984 helicopter surveys. With a current population of about 70 bighorn, the transplant is approaching success, but may take several years to become fully established.

Several problems face this population. Disease is typically more prevalent in moist habitats such as the Virgin Mountains than in drier areas like the Black Mountains or Kofas. We will probably lose more bighorn to pneumonia than these other areas lose. Bighorn contact with domestic sheep will increase this problem. Escaped domestic rams from the Arvada Game

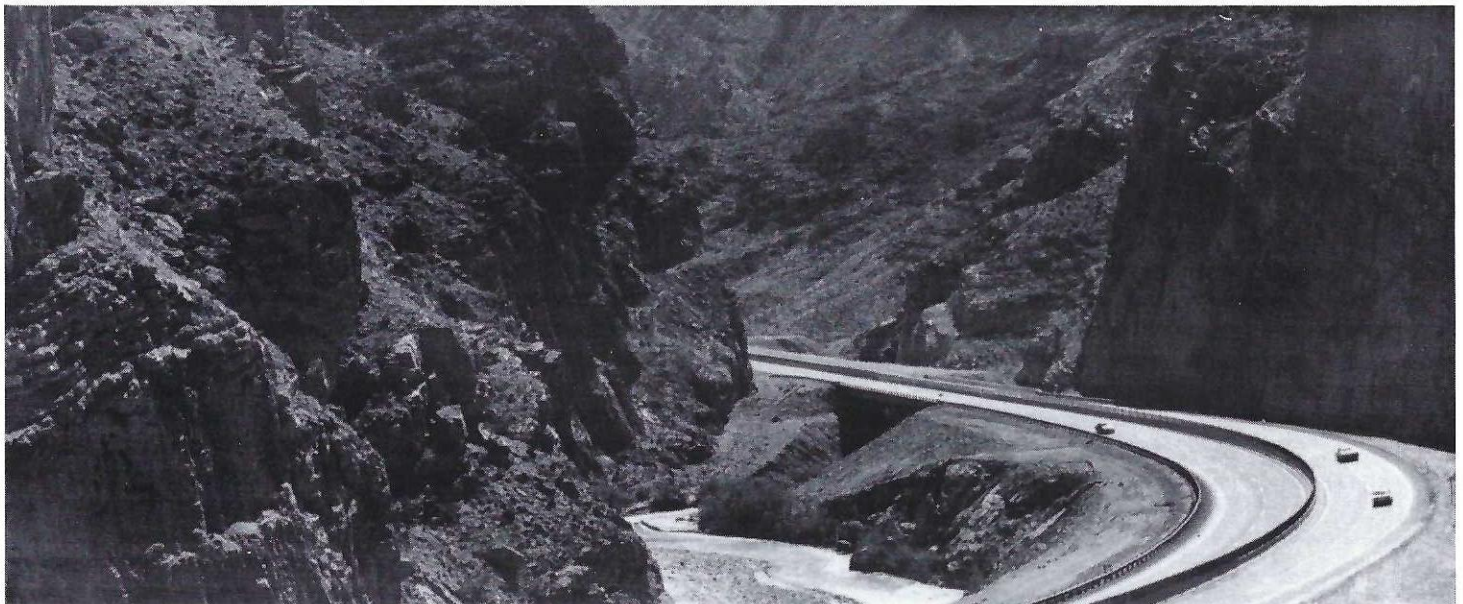
Ranch have wandered to the slopes of the Virgin/Beaver Dam Mountains complex, and legal domestic sheep grazing occurs adjacent to the Beaver Dam Mountains in Utah. Both these sources of contamination are receiving careful scrutiny.

The recent decline of the Black Rock deer herd has caused transient mountain lions to seek prey in bighorn habitat, and we will lose a few bighorn this way until the lion population also declines. Predator control does not offer a cure: following the original transplants, trapping for lions was attempted and none were caught within bighorn habitat. Obviously, the AGFD is encouraging sport hunting of lions in this area.

The potential for roadkills along the Virgin River Gorge section of Interstate 15 exists, but apparently bighorn are able to avoid this threat and we have only lost one yearling ram so far.

The bighorn transplant into the Grand Wash Cliffs presents a brighter picture — driver habitat, no domestic sheep, fewer lions, and no freeways. The results are bright also. Transplants of drop-net captured bighorn from Lake Mead were made in 1983 and 1984. The animals quickly established home ranges around the two water catchments constructed by BLM. Interchange between bands and exploration are common.

The first transplant occurred during breeding season and was followed by a severe winter drought, yet lamb production was still 40 lambs: 100 ewes. My greatest pleasure during monitoring this population was watching a herd of six marked ewes and a marked yearling ram. It being September, the young ram was seeking the ewes' favors, but without much success. As they slowly filed out the canyon below me, I found out why. The last ewe was being intensely courted by a large horned, unmarked, 4 year old ram that had traveled over 20 miles from the Grand Canyon. So, with a little help from our friends ...
TRS



The Virgin River Gorge, sight of a 1981 transplant.

1986 FUND RAISER

It's time to begin work on the 1986 Fund Raiser. The date of January 25th, a Saturday, will be here all too soon. The banquet will be held at the Registry Resort, in Scottsdale; and hopefully the Saturday date will allow full participation from all of our members.

The fund raising committee has already met to begin work. Listed below are the names of the committee chairmen. If you have any questions or would like to participate, please contact any of the members listed below:

PETE CIMELLARO Chairman 275-5198
BILL HOOK Art 949-3474
JOE BILL PICKRELL Special Events 269-7911
JIM FIEDLER Firearms 981-9400
LARRY HEATHINGTON Taxidermists 836-9386
TOM BOGCESS Hunts 943-5023
DEAN BOWDOM Arrangements 863-5362
DON JOHNSON Tickets 274-0383

The goal of this banquet is simply to raise as much money as possible for sheep management in Arizona. If you can help us achieve this goal we certainly would appreciate your help; be it in the form of soliciting donations, arranging the banquet, or simply spending a lot of money the night of the fund raiser.

Below is a partial list of donations received. This list will be updated in future Rams Horns. We would like to thank all of our donors for their support, and encourage all to help support our project.

HUNTS

2 day mountain lion hunt, foot or horseback. Donated by Rick Dickerson, 4001 N. Lone Cactus Dr., Phoenix, AZ.

2 day lion hunt; hounds and horses. Donated by Travis Stodghill, P.O. Box 193, Pine, AZ.

3 day lion hunt on horseback with hounds. Donated by Gerald Swindle, 6416 S. 122nd Avenue, Tolleson, AZ.

2 weekend lion hunt, on foot, donated by Joe Mitchell, 6928 W. Beatrice, Phoenix, AZ.

2 day black bear hunt with spotting scope and glasses. Donated by Marvin James, P.O. Box 964, Sedona, AZ.

OTHER

2 nights at Embassy Suites Hotel. Donated by Susan Gilel, 3211 E. Pinchot, Phoenix, AZ.

1 free mount, full shoulder to lifesize. Donated by Steve Favour, 807 S. Beeline, P.O. Box 465, Payson, AZ.

1 Sheep shoulder mount. Donated by Meacham Taxidermy, Oracle Junction, AZ.

1 Remington ADL Rifle. Donated by Metro Business Forms, P.O. Box 7612, Phoenix, AZ.

2 Roffler Hair Styles. Donated by Jim Muntz, 33 N. Alma School, Mesa, AZ.

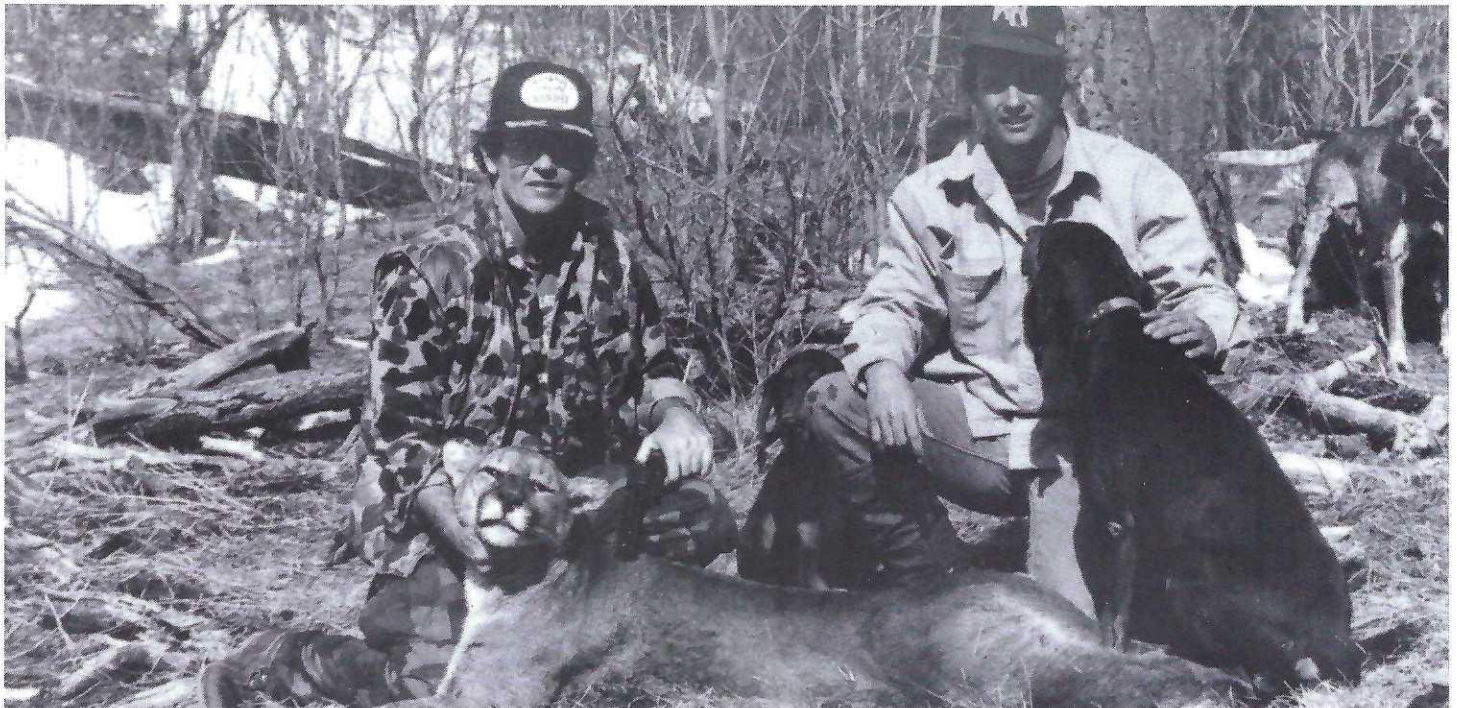
1 pair of Red Wing boots. Donated by Jim Webster, 6054 N. 16th Street, Phoenix, AZ.

Sunday brunch for 2 at Scottsdale Conference Resort.

1 day in field with Lion Biologist. Donated by Harley Shaw, P.O. Box 370, Chino Valley, AZ.

1 camper shell. Donated by Universal Campers, 2928 E. Washington, Phoenix, AZ.

\$100.00 veterinary services. Donated by Jim Matchette, 7811 N. 35th Avenue, Phoenix, AZ.



Robin Bechtel (left) poses his handsome kill with his guide Joe Mitchell and friends.

AUCTION/RAFFLE FUND RAISER

At the August 16th commission meeting the Society presented a check to the A.G.&F. Department for \$100,000.00 which was raised as a result of the 1985 auction and raffle permits.

This brought the two year total for this program to \$249,000.00. That's a lot of money raised by sportsmen to help the desert bighorn sheep in Arizona.

This year there is a change in the location and dates of the hunts. The auction permit is in the Kofa's, and the raffle permit in Unit 15 near Kingman, and both hunts will begin after the regular sheep hunt. The Kofa will be the location in which Dennis Hankerson of Phoenix will be hunting. Last February Dennis purchased the auction permit for \$42,500.00 at the F.N.A.W.S. annual convention held in Reno. Dennis said he had intended to dropout at \$35,000.00, but someone poked

him when the bids were at \$42,000.00 and the next thing he knew they wanted his check.

Mary Peterson of the N.R.A. drew the winning ticket for the raffle. Craig Krienke of Round Rock, Texas is the lucky winner and will be hunting in Unit 15. Craig's father, Roland, got his ram recently in Nevada. **Fifteen year old** Craig who is quite a hunter in Texas, will be making his first hunt in Arizona. What a way to start!

The Society wants to thank the F.N.A.W.S. for allowing the Society to auction the permit at their convention, and all the hunters who spent their hard earned money to help the sheep in Arizona.

Good hunting to the lucky hunter, and for the rest of us, we can only look forward to next year.

THE LAVA RAM

On the Pinacate Mountain Slope, N.W. Mexico.

OUT of the lava I saw you rise,
A lean, bold figure in brown.
You gaze at me in calm surprise,
And the red-hot sun beats down.

On a blasted hill-top you stand alone;
Black is the landscape around;
Hills and valleys of scowling stone,
With never a foot of ground.

My feet are lame and my lungs are hot,
And the glare makes my brain feel queer;
But you, ye devil, you mind it not,
And you live here throughout the year.

Tell me, ye Sphinx with the curling horns,
What food does the cholla bear?
When every plant has a million thorns,
What is your daily fare?

Can ye chew bisnagas to quench your thirst?
Is the brittle-bush fit for food?
Do you tackle the Bigelow cholla accurst?
And do nigger-head spines taste good?

Where do you drink when the tanks are dry,
And these mountains are sissing hot?
Now, just 'twixt friends, won't you tell me why
You love this infernal spot?

No wonder your size is below the mark,
And your limbs are slender and lean.
No wonder your hair is so short and stark.
It's because your fare is so mean.

But your horns, old Ram, are massive enough,
And as long as they ought to be.
The heat has made them uncommonly rough,
But their size is sufficient for me.

Bold Sheep of the Lava, the last and the first,
I give you my hearty salaams.
Defiant of grilling, and hunger and thirst,
You are surely the toughest of rams.

NEW MEMBERSHIP

Lamar Haines	905 N. Beaver, Flagstaff, AZ
John Ditsworth	300 N. Main, #101, Tucson, AZ
Jack W. Young	308 W. Juniper Ave., Gilbert, AZ
Henry Aguilar	P.O. Box 3235, Kingman, AZ
David Little	2021 N. Camino Pio Decimo, Tucson, AZ
Randy Ryoti	4335 E. McDowell Rd., Phoenix, AZ
Ladonna K. Cernansky	19226 N. 47th Ln., Glendale, AZ
Peter R. Cernansky	19226 N. 47th Ln., Glendale, AZ
Gerald McEwen	P.O. Box 188, Young, AZ

1985 SHEEP HUNTERS

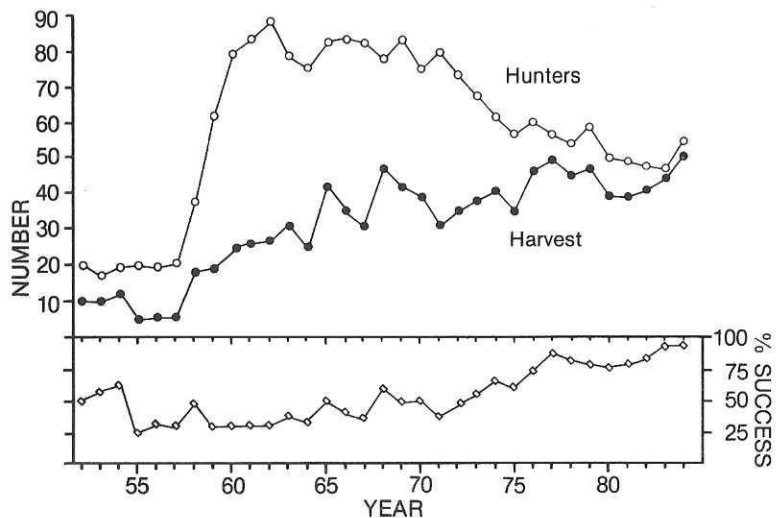
Congratulations on the draw!

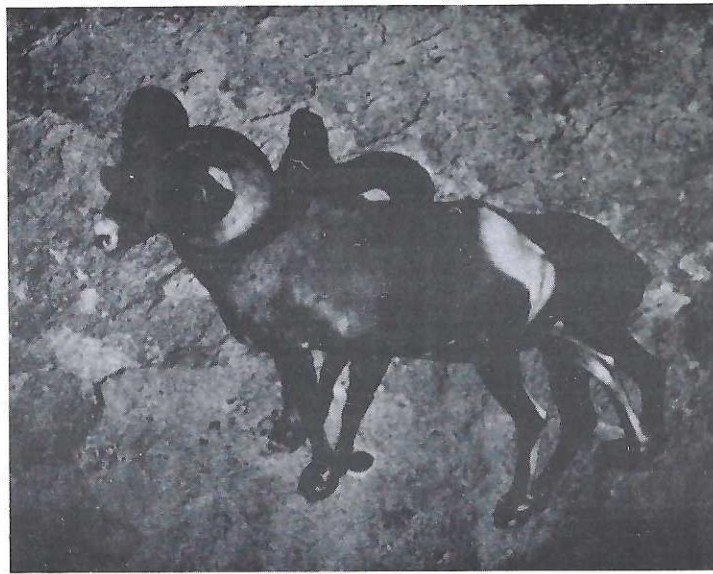
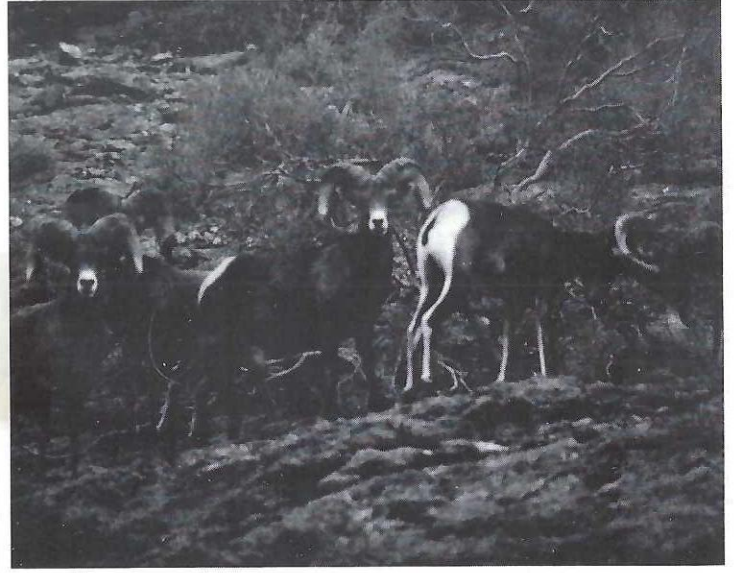
Warren A. Adams	Tucson, AZ	Vincent J. Immordino	Phoenix, AZ
Earl L. Bassett	Phoenix, AZ	Gary P. Kappas	Tempe, AZ
Robbie A. Brown	Tucson, AZ	Michael A. Kerekes	Yuma, AZ
David M. Brundage	Camp Verde, AZ	Allen R. Kirk	Phoenix, AZ
Madeleine Cushing	Glendale, AZ	Peter C. Knagge	Tucson, AZ
Thomas J. Davis	Tempe, AZ	Joanne G. Knagge	Tucson, AZ
Ronald G. Davis	Glendale, AZ	Keith A. Knipp	Phoenix, AZ
Jane M. Earick	Phoenix, AZ	Troy J. Lane	Flagstaff, AZ
Aalen Ellis	Coolidge, AZ	Jack E. Lane	Flagstaff, AZ
Edward D. Flores	Flagstaff, AZ	David A. Lay	Flagstaff, AZ
Frank J. Gransky	Apache Jct., AZ	Diane L. Magivor	Prescott, AZ
Roger L. Gregg	Turlock, CA	Joseph C. McGill	Phoenix, AZ
Diane M. Hanna	Vail, AZ	Thomas D. McWilliams	Phoenix, AZ
Vern M. Haugen	Scottsdale, AZ	Rick G. Mollineaux	Flagstaff, AZ
William A. Heuer	Sassamanville, PA	C. W. Neely	Chandler, AZ
Michael O. Hill	Phoenix, AZ	Rupert F. Dsegueda	Flagstaff, AZ
Tim M. Holleran	Phoenix, AZ	Frank J. Oviedo	Phoenix, AZ
		Ryan W. Palmer	Eaga, AZ
		Loren G. Pederson, Jr.	Oracle, AZ
		Robert A. Pitcairn	Delta, BC Canada
		Mark Rada	Phoenix, AZ
		James H. Reece	Chandler, AZ
		Gerald K. Remaklus	Paradise Valley, AZ
		Donald E. Roberts	Tucson, AZ
		Kyle L. Saad	Peoria, AZ
		Felix E. Sanchez	Mesa, AZ
		Larry D. Shilling	Cornville, AZ
		Robert W. Simbric	Camp Verde, AZ
		Eric C. Simpson	Juneau, AK
		Barry R. Sopher	Tucson, AZ
		Ralph C. Stayner	Mesa, AZ
		Roberts Steele	Kingman, AZ
		William L. Stoffers	Glendale, AZ
		Rodger J. Stolp	Eau Claire, WI
		Jeff B. Van Hyning	Mesa, AZ
		David W. Wilson, Sr.	Phoenix, AZ
		Jack W. Young	Gilbert, AZ

Table 1.
Summary of Arizona desert
bighorn sheep harvest

Year	Permits Authorized	Hunters Afield	Harvest	Percent Success
1953*	20	20	10	50
1953*	17	17	10	59
1954	20	19	12	63
1955	20	20	5	25
1956	20	19	6	32
1957	20	20	6	30
1958	40	37	18	49
1959	65	62	19	31
1960	80	80	24	30
1961	85	84	26	31
1962	90	89	27	30
1963	81	79	31	39
1964	78	76	25	33
1965	90	83	42	51
1966	84	84	35	42
1967	84	83	31	37
1968	81	77	47	61
1969	86	84	42	50
1970	79	76	39	51
1971	85	81	31	38
1972	74	74	35	47
1973	71	68	38	56
1974	63	62	41	66
1975	60	57	35	61
1976	61	61	46	75
1977	57	57	50	88
1978	58	54	45	83
1979	59	59	47	80
1980	50	50	39	78
1981	51	49	39	80
1982	48	48	41	85
1983	48	47	44	94
1984	55**	55	51	93
TOTAL	1,980	1,931	1,037	54

*Two hunts in 1953. **3 Special permits included.





Above: Kofas on sheep count — Summer, 1985.

SOCIETY APPROVES STUDY IN KOFAS

On August 14, 1985 the Board of Directors of the Sheep Society agreed to fund a mark, re-mark study in the Castle Dome Mountains of the Kofa National Wildlife Refuge.

This study is designed to record population densities of desert bighorn sheep in a designated area through the use of paint markings. The study will be done with the use of a helicopter on a designated day, and the sheep will be marked with a colored dye. They will then fly a few days later and re-mark again in an effort to determine how many new sheep were located that were not seen during the previous flight.

The study will cost approximately \$15,000.00, primarily to be used to fund helicopter hours. It is hoped that this study will make an accurate determination as to what percentage of sheep are observed in a routine helicopter survey. A number of percentages from 50 to 75% have been used in research projects in the past. This will give us an idea of how accurate aerial surveys can be, if done properly. However, a 1980 study in the same area of the Kofa National Wildlife Refuge showed a 19 to 21% second observation rate from their first flight.

TRINKETS

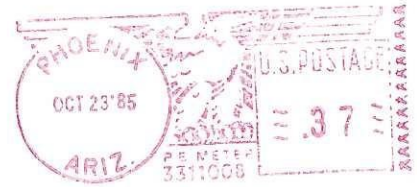
Arizona Bighorn Sheep Society shirts, books, Koozie cups, prints and pins are available.

Contact Tom Martin 581-2219

Any member interested in running for a board position, contact nomination's chairman, Bill Hook 949-3474.

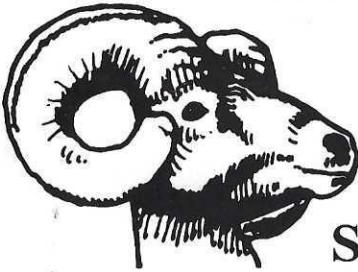
THE RAM'S HORN

P.O. BOX 5241
PHOENIX, ARIZONA 85010



BH000848A 8412 8335651
MATTHEW DOMINY
1415 E BATES RD
MESA AZ 85203

ADDRESS CORRECTION REQUESTED



Send Pictures!

Had a successful hunt???? Send us an article, along with pictures, and we will print them in the Rams Horn.

REWARD

Report Wildlife Violations

The ADBSS offers a \$1,000 Reward for information leading to the arrest and conviction of anyone poaching bighorn sheep in Arizona.

CALL: 1-800-352-0700

Board Meetings

The ADBSS Board Meetings are held on the 2nd Wednesday of each month. The meetings are open to all concerned members. Time of meeting: 7:30 p.m. to 9:30 or 10 p.m. For location, call President Jim Fiedler.

MEMBERSHIP INVITATION

Individuals who are interested in promoting the welfare of the Desert Bighorn Sheep and desire to affiliate with an organization dedicated to this purpose may do so by joining the Arizona Bighorn Sheep Society, Inc.

The membership roster of the Society includes conservationists, sportsmen, professional wildlife managers, educators, biologists, photographers and just plain folks all interested in the Arizona Desert Bighorn Sheep.

The Society undertakes an annual program of several (usually 5) major habitat improvement construction projects in cooperation with and under the direction of the State and Federal agencies responsible for management of the Desert Bighorn Sheep.

One of the more important projects of the Society is the conduction of the annual Sheep Clinic training program.

In addition to projects, members of the Society participate in other conservation and game management activities; a special legislative committee of the Society closely watches legislation that may affect the sheep or its habitat and general welfare.

While the opportunities for active participation are numerous, such participation is not a prerequisite for membership. All interested persons are encouraged to join, the Society needs and welcomes your moral and financial support.

MEMBERSHIP APPLICATION

I hereby make application for membership in the Arizona Desert Bighorn Sheep Society, Inc., and enclose my membership donation. DONATIONS ARE TAX DEDUCTIBLE.

New membership prices are as follows:

Regular membership	\$25.00/yr.
Youth membership	\$15.00/yr.
Sustaining membership	\$100.00/yr.
Lifetime membership	\$500.00

RENEWAL NEW MEMBERS DATE _____

NAME _____ TEL. NO. _____

ADDRESS _____

CITY _____ STATE _____ ZIP _____

Make checks payable to Arizona Desert Bighorn Sheep Society, Inc.
P.O. BOX 5241 • PHOENIX, ARIZONA 85010