

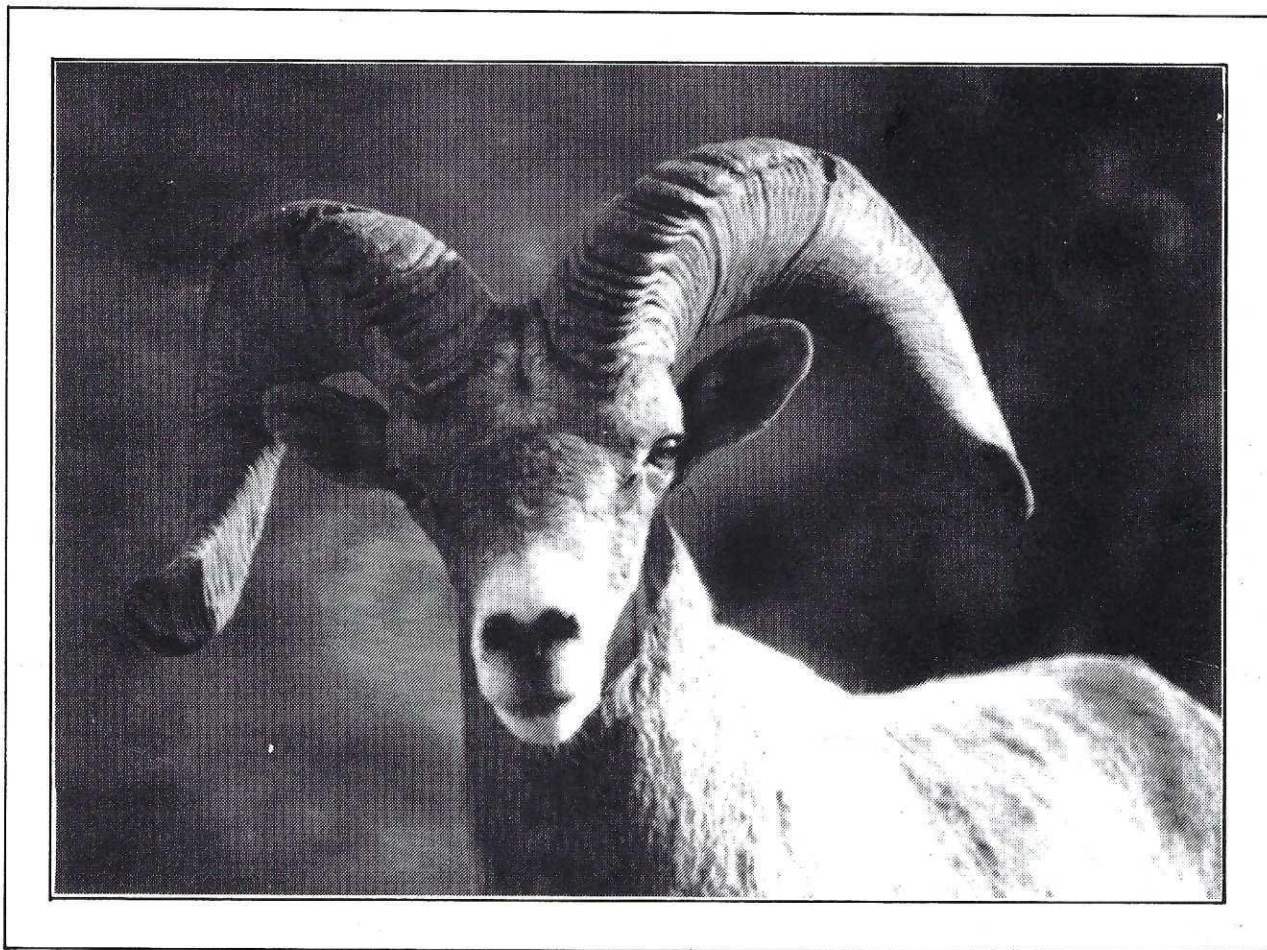
THE RAM'S HORN

OFFICIAL PUBLICATION OF THE ARIZONA DESERT BIGHORN SHEEP SOCIETY, INC.
A NON-PROFIT, TAX EXEMPT CORPORATION

Volume 20

Spring '87

#1



THE RAM'S HORN

P.O. Box 5241, Phoenix, Arizona 85010 is the official publication of the Arizona Desert Bighorn Sheep Society, Inc., and is published quarterly for the Society's membership. Current Membership: 600.

Arizona Desert Bighorn Sheep Society, Inc.

ADBSS 1987 BOARD OF DIRECTORS & COMMITTEES

EXECUTIVE BOARD

PRESIDENT H: 996-1997
 Jim Marquardt O: 992-7220
VICE PRESIDENT H: 840-8749
 Pete Cimellaro O: 275-5198
SECRETARY
 Paul Ruskaup H: 992-0303
TREASURER H: 945-7379
 Bill Hook O: 949-3474
PAST PRESIDENT H: 943-0454
 Joe Bill Pickrell O: 269-7911

DIRECTORS AT LARGE

John Harris H: 882-7301
 O: 791-4926
 Larry Heathington H: 836-9386
 Tom Martin H: 581-2219
 O: 253-7922
 Kris Miller H: 841-5899
 Bob Orth H: 956-5977
 Robbie Robinson H: 834-0816
 Lendell Sherrick H: 996-9315
 O: 995-3220
 Steve Williams H: 257-1917
 O: 255-4625

COMMITTEE CHAIRMEN

BOOK H: 945-7379
 Bill Hook O: 949-3474

BY LAWS & RESOLUTIONS

Harry Hussey H: 942-8104

FINANCE

Kris Miller H: 841-5899

LEGISLATION

Steve Williams H: 257-1917
 O: 255-4625

LIBRARY

Robbie Robinson H: 834-0816

MEMBERSHIP

Bob Orth H: 956-5977

NOMINATIONS

Joe Bill Pickrell H: 943-0454
 O: 269-7911

PROGRAMS

Larry Heathington H: 836-9386

PROJECTS

Dean Bowdoin H: 955-8636
 O: 863-5362

PUBLICITY

John Harris H: 882-7301
 O: 791-4926

RAMS HORN

Bryon Wiley H: 992-6380
 O: 256-9444

ZOO

Win Welch H: 841-0318

Administrative Office of ADBSS (602) 957-0773
 3602 E. Campbell, Phoenix, AZ 85018

LIFE MEMBERS

Lee Arce	Arthur Pearce
James R. Barrow	R. Norman Pearce
Pete Cimellaro	Fred Peters, D.D.S.
Claude Evans	Jack Pinckney
Perry H. Finger	Art Porter
Nicolas Franco	Catherine E. Tuft
John Gillett	Bryon Wiley
Bob Gourley	Greg Wiley
Alan Guenther	Martin F. Wood
Dennis Hankerson	Marvin Wood
Harvey Kadlec	W.T. Yoshimoto

CALENDAR OF EVENTS

1987

Waterhole Projects

January 10/11	AGF
Jan. 31/Feb. 1	Fish & Wildlife - Kofa
February 21/22	Foundation for North American Wild Sheep
March 7/8	Minn/Wisc Chapter
March 21/22	Triple Eye
April 11/12	Dominy Pothole
May 2/3	Kingman-Lost Cabin Springs

Events

February 7	4th Annual Fund Raiser
	Hyatt Regency - Phoenix
May 16	Annual Steak Fry
October 3	Hunter Clinic & Awards Banquet
(tentative)	
November 11	Annual Membership Meeting
(tentative)	

NOTE

COVER PHOTO

Picture taken by Bryon Wiley
 Desert National Wildlife Refuge

PRESIDENT'S MESSAGE

Assuming the office of President of the Society is a lesson in humility. The incoming President is always put in the position of having a tough act to follow. The examples of one's predecessors loom heavily as examples to follow. Many thanks to Joe Bill for the great job which he did in 1986. I certainly hope that this administration will measure up in 1987.

We have an ambitious program of waterhole development projects for 1987. We have already completed one and have an additional 5 more planned. Dean Bowdoin has arranged for projects stretching from the Mexican border to the Kingman area to satisfy needs throughout the state.

In 1986, the Society assisted in successful sheep captures and transplants in July and November. The captures were in the Kingman area and the Kofa Mountains, respectively. We hope to be heavily involved in this kind of work again this year. Our auction and raffle permit programs are designed to support the capture and transplant program and your participation is solicited.

Let us work together to make 1987 a successful year for the Society. Any help, suggestions, or prayers which you may have are respectfully solicited.

JANUARY BOARD MEETING SUMMARY

A new feature in the "Rams Horn" will be a short summary of monthly Board of Director meetings that take place between issues. This service is a step to keep the general membership informed of Society activities.

Your attendance at these meetings is invited. The second Wednesday of each month at 7:00 p.m. is the time, and the location can be learned by calling the ADBSS Administrative office at 957-0773. See you there.

At the January 14th Board of Directors meeting, twenty-three attendees participated in the nuts and bolts workings of the Society. In addition to the normal board position and committee reports, a special presentation was included in the evening activities.

Stan Cunningham of the Arizona Game and Fish Department, and also a Society member, gave a slide presentation on desert sheep transplant sights in recent years and how the success or failure of the releases is possibly linked to the qualifying of the habitat chosen for the release.

Using a multifaceted scoring system, Stan graphically illustrated a correlation between a high score in a given release sight and the viable, increasing sheep population there-in. Conjunction areas receiving low scores using this system, have tended to show little or no apparent increases in herd size since the transplant dates. Several examples were given.

Stan Cunningham's evaluation method for future release sights takes into account factors like - steep slope or escape habitat - water availability - feed quality - human activity and so on.

This system may be a valuable tool to researchers in considering future sheep transplants. It warrants serious consideration.

Another important issue discussed by Society members was an issue born of necessity. On past transplants done with net guns, time was wasted while nets were regathered, costing precious hours and precious dollars. As two net capture guns are currently used during reintroduction work, a third would greatly facilitate the costly process of moving sheep. Discussion on how to best fund such an expenditure will eventually lead to the purchase of the new net gun and three or four nets.

WATER DEVELOPMENT PROJECTS

One of the most important activities the Sheep Society is involved with is the development of water in areas where very little permanent water exists. We do 5-7 such projects each year in cooperation with the Arizona Game and Fish, Fish and Wildlife, BLM, Military reservations and other agencies.

These projects are extremely important to the Bighorn Sheep in Arizona and are the backbone of the Sheep Society.

Each project is different and has its own peculiarities and challenges.

Helicopters are used on most projects which allows us to build the water supply up in the rugged sheep country where the Bighorn Sheep can easily locate and use the water during the extreme temperatures.

It has been the policy of the Sheep Society to furnish the Saturday evening meal and Sunday morning breakfast. After a hard day's work on the mountain it is really appreciated to have a good meal waiting.

The Saturday evening campfire is always a fun time where everyone can get acquainted and have a chance to talk about sheep.

We would really like to get more of our members to participate in these very important projects. Come on out and do as much work as you feel you can. No one is expected to do more than he is physically able to do. There is plenty for everyone.

When the work is done and you sit down and observe what has been accomplished, you realize that your efforts are really worthwhile and you know that the results will be here for sheep many years after you have long gone. You will have great satisfaction for a project well done and know you have contributed to the future of the desert bighorn.

The schedule for the 1987 water development projects is as follows:

Signal Peak - January 10/11

Castle Dome Mountains (Adams Well) - January 31/February 1

Sand Tanks - February 21/22 - Funded by Foundation for North American Wild Sheep

Woolsey Peak (Gila Bend Mts) - March 7/8 - Funded by Minnesota/Wisconsin chapter of FNWSS

Triple Eye (Eagle Tail Mts) - March 21/22

Dominy Pothole (Mohawks) - April 11/12

Cabin Spring (Kingman) - May 2/3

Project flyers will be in the mail approximately 10 days before each project with a detailed map of how to get to the project site.

Anyone wanting information on the water projects can contact Project Chairman, Dean Bowdoin, office 863-5362, home 955-8636.

PUSCH RIDGE SURVEY

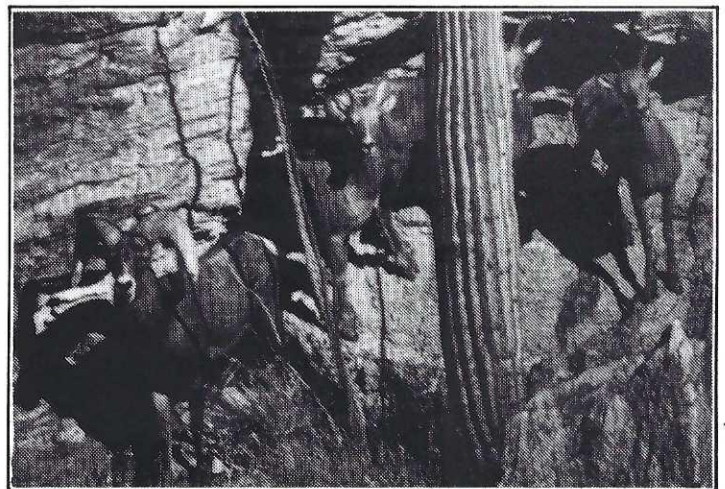
Friday night on October 17th found twenty-five desert sheep enthusiasts gathering to assist the Tucson Game and Fish Dept. in an effort to survey the Catalina Mountains desert sheep population.

The Pusch Wilderness Area, located just north of Tucson, is home to some of the healthiest desert sheep on the globe. And what a home it is! Abundant water and feed coupled with much vertical, boulder strewn real estate produce a habitat that is ideal for sheep, but very difficult to accurately survey.

Coordinating the survey effort for the Game and Fish Dept. was wildlife manager Eddie Cocking. Eddie's plan (plan A) was to place observers on the ground in strategic locations while a Bell Ranger helicopter spun its way around the pinnacles and canyons to maximize, and later separate, all sightings made. Mother Nature's plan (plan B) turned out like this: Place observers in prescribed locations and cause the wind to blow so hard the chopper has to stay grounded!

The helicopter did fly Sunday and with Saturday's ground observations a total of 58 non-duplicate sightings were tallied. These figures include 6 class 3 rams and 4 class 4 rams.

There has been some controversy that the yearly surveys in this area may not turn up a large percentage of the sheep in the Pusch Ridge Area due to the ruggedness and dense foliage found in this unique piece of desert sheep habitat. Even though this year's survey ended more or less average when compared to past years' surveys, the hope is to increase next year's permit total to two permits.



SIGNAL PEAK - WATER HOLE PROJECT

JANUARY 10/11, 1987

by Dean Bowdoin

This project was the first for 1987 and is located in the Gila Bend Mountains southwest of Buckeye.

All materials were helicoptered to the work site and took about 35 sling loads.

The project consisted of constructing two masonry dams (6'x10') and (6'x12'). The two pot holes will provide water storage in the amount of 15 to 20 thousand gallons and will provide water for sheep and other wildlife in a mountain range where no permanent water previously existed.

Above the water holes, a silt control gabian was constructed to prevent silt from filling the holes during heavy run off.

A few members arrived early Friday to assist the helicopter operations and were able to get the upper dam re-bar installed so that dam construction could start early Saturday morning when work crews arrived.

There were approximately 32 sheep enthusiasts on the project. Work was completed by noon on Sunday.

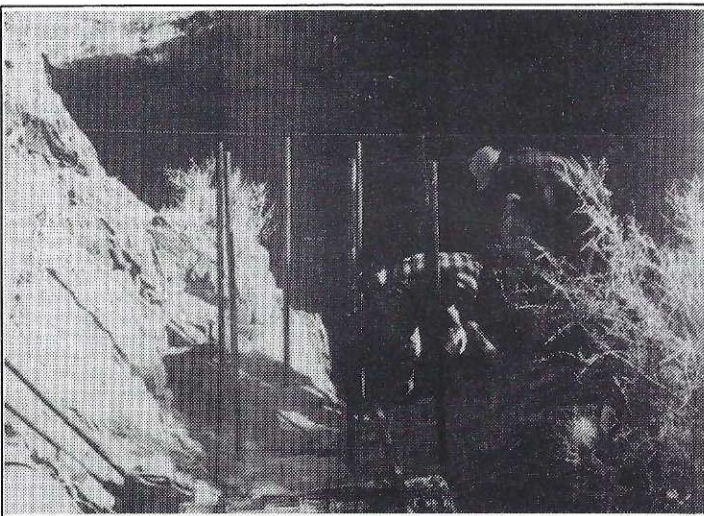
Saturday evening's meal consisted of steak, baked potatoes and beans with appetizers. Breakfast Sunday morning was scrambled eggs with biscuits and gravy. Both meals were furnished by the Sheep Society. Our thanks go out to the cook crew (Joe Bill Pickrell, Bill Hook, Win Welch, and others who helped).

All materials and helicopter time for this project was paid for by the Sheep Society at an approximate cost of \$4500.00.

This water development is critical in preparation for a future supplemental transplant. There are plans to transplant sheep into the range in the next two years and permanent water is essential prior to any transplants.

Our appreciation to all those who attended and worked so very hard to insure another successful water project.

We would like to see more Society members attend because we really need the help.



SIGNAL PEAK PROJECT LIST OF ATTENDEES

Eugene Risch
Kris Miller
William Duffy
Tyler Weisser
Ron Wolfe
Paul Ruskaup
William Robinson
Bill Hook
Richard Remington
Mick Monroe
Jim Diment
Don Belknap
Mark Fredlake
Doug Wolfe
Marcus Stanley
Dean Bowdoin

Carl Scrivens
Stan Cunningham
Bill Werner
Bill Carney
Jim Marquardt
Win Welch
Dave Conrad
Ed Shannahan
Larry Heathington
Steve Monroe
Lowell Whitaker
Stephen Williams
Al Guenther
Steve Weisser
John Gunn
Dan Wolfe

1985 HUNT



SILVER BELL GIANT

During December the '85 sheep hunt produced what may be the largest ram ever taken in the Silver Bell Mountains northwest of Tucson.

Robbie Brown's ram scores 177 2/8 B.C. points. Truly an unusual ram for the area.

KOFA RAM

Another good ram taken during the '85 hunt was taken by Dan McWilliams.

Steve Weiser assisted in taking the 10 year old ram - truly a trophy to be proud of.



YUKON STONE

The Summer of '86 found Society member Bryon Wiley on his second try for a stone sheep in the vast Yukon Territory.

The search for a trophy ram turned up a herd of nine with one old buster well past full curl. After a long stalk, the ten year old ram was taken in his bed at a range of 300 yards.

An added bonus to the ten day adventure was the taking of a very good mountain caribou, making the hunt truly a dream come true.

LOOKING FOR SUCCESSFUL SHEEP HUNTERS

As the '86 Desert sheep hunt has drawn to a close, the memories of your once-in-a-lifetime adventure will last an eternity. I would like to congratulate the successful hunters on fulfilling a dream that for most of us truly comes once-in-a-lifetime.

An important aspect of the "Rams Horn" publication is to recognize those rams taken by including an article and photo of the hunt in future issues. We need your help and are asking each successful hunter to *please* send a photo and short story, or pertinent information about the hunt so we can share your hunt with other ADBSS members.

It is important that the information be sent as soon as possible so we can get *your* story in the next issue possible. Please indicate whether or not the photo need be returned.

Send the material to The Administrators at 3602 E. Campbell, Phoenix, AZ 85018, or directly to me, Bryon Wiley at 1638 E. Paradise Lane, Phoenix, AZ 85022.

TRINKETS

Society Merchandise For Sale

Golf Shirts	\$12.00 each	Medium, Large
T-Shirts	\$ 6.00	Medium, Large
Koozie cups	\$ 3.00	
Caps	\$ 5.00	
Patches	\$ 2.50	
Tie tacks-Gold	\$50.00 each	Silver \$25.00 each
Hat pins	\$ 5.00 each	(available only at waterholes)
Sheldon Journals	\$50.00 each	

The Wilderness of Desert Bighorns and Seri Indians by Charles Sheldon

The book, published by the Society in 1970, is available in the limited edition Regular copy only. The Collectors copies are all sold out. This book would make a special gift for family and friends. This book of Charles Sheldon's travels in the Southwest in the early 1900's contains about 375 pages with 75 photographs about a variety of aspects in Arizona and Mexico. The material will be very enjoyable reading for conservationists, hunters, and history buffs.

Get your orders in early before the remaining limited supply is sold out. There were only 100 copies of the Collectors Edition and only 900 copies of the Regular Edition.

Address check or money order to:
 ADBSS
 P.O. Box 5241
 Phoenix, AZ 85010

	Quantity	Cost	Total
Golf Shirts	_____ x	12.00 =	_____
T-Shirts	_____ x	6.00 =	_____
Koozie cups	_____ x	3.00 =	_____
Caps	_____ x	5.00 =	_____
Patches	_____ x	2.50 =	_____
Tie tacks-Gold	_____ x	50.00 =	_____
Tie tacks-Silver	_____ x	25.00 =	_____
Sheldon Journals	_____ x	50.00 =	_____
TOTAL \$			_____

U.S. FUNDS OR EQUIVILANT, PLEASE

Name _____
 Address _____
 City _____ State _____ Zip _____

Include \$1.50 for postage.

1986 KOFA HUNT

The start of the '86 desert sheep hunt saw gloomy weather as an ever present threat. For two of the hunters in the West Kofa area in Unit 43B, the on again-off again rain showers and cold, brisk winds failed to hamper an exciting first couple of days.

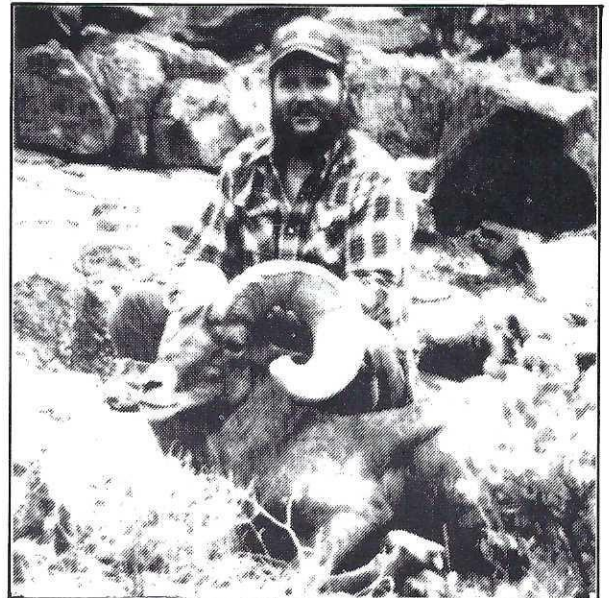
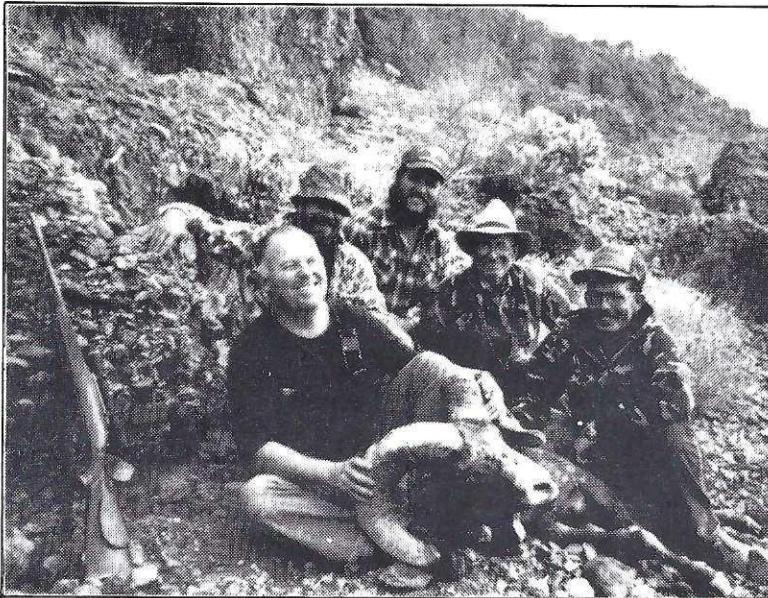
Peter Reardon of Mesa and Gary Sitton, a resident of Abilene, Texas, were hunting from the same camp assisted by Larry Heathington. Scouting previous to the first day of hunting had turned up a herd of rams containing a beautiful animal that suited Gary's criteria to a tee. The decision was made to stalk the bachelor herd and by mid afternoon on day one, Gary Litton had an eight year old ram that again scores around 167 B.C. points. The ram was taken at a range of approximately 225 yards.

Camp talk that first night was high in spirit as plans were made to team up to find a ram for Peter.

Also assisting on the hunt along with Larry were Bill Cross, Bill Carney, Dwain Barkley, Bryon Wiley and Bob Fronske.

Many rams had been located on scouting trips well previous to the hunt. One that particularly intrigued Peter was an old ram that had some history behind it. Larry had found a ram wearing a radio collar with massive, broomed horns that Game and Fish people had collared at age four. That put the rams age at twelve years and a prime target for any conscientious hunter to consider taking.

The old ram was again located Saturday afternoon and plans to stalk the aging animal the next morning ended in the taking of a fine trophy. Peter's unusual trophy scored about 165 B.C. points and was taken with one shot at 200 yards.

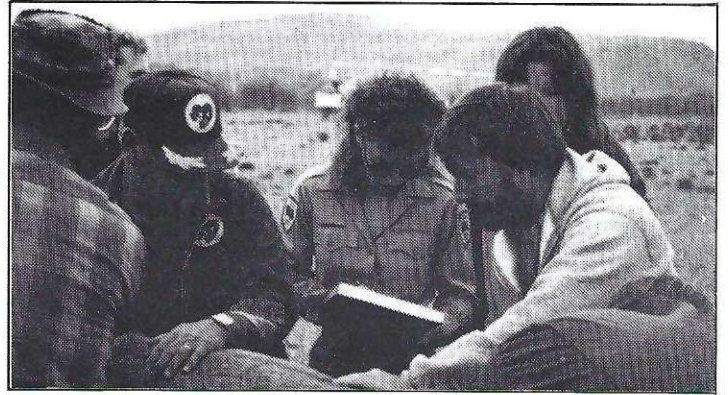
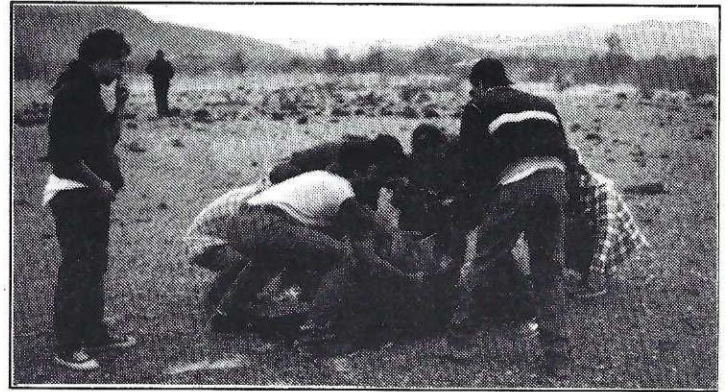


YOUR SHEEP MONEY AT WORK HERE'S HOW YOUR MONEY WAS SPENT

HISTORY OF BIGHORN SHEEP RELEASES

Years	# Released
1950-1959	19
1960-1969	6
1970-1979	46
1980-1986	509
TOTAL	580

1980 - 61
1981 - 92
1982 - 19
1983 - 85
1984 - 106
1985 - 88
1986 - 58



31 SHEEP MOVED TO PELONCILLO MOUNTAINS

Thirty-one bighorn sheep have been transplanted from the Kofa Mountains of Western Arizona to Peloncillo Mountains in the southeastern part of the state in the latest effort by the Arizona Game and Fish Department to restore the species to suitable areas of its historic habitat.

The project was conducted with the cooperation and assistance of the U.S. Fish and Wildlife Service, which manages the capture site, U.S. Bureau of Land Management, which manages the release site land, and the Arizona Desert Bighorn Sheep Society which paid for most of the operation and also contributed volunteers for the operation.

Bighorn sheep involved in this latest operation were captured in the mountains of the Kofa National Wildlife Refuge, November 17 and 19, using a gun-launched net fired from a helicopter. Five rams and eleven ewes were captured Monday and released Tuesday; another four rams and eleven ewes were captured Wednesday and released Thursday the 20th. Rain prevented capturing sheep on the 18th.

The capture worked so successfully that no sheep had to be tranquilized and all made the trip from capture to release site in good condition.

As in other sheep captures, blood samples were taken from the animals as soon as they were caught. These will be tested for evidence of disease.

In order to increase the dispersal of the bighorn sheep throughout the available range and ultimately reduce the potential for overcrowding, the sheep were let go in two "mini-releases" in sites approximately 6 miles apart. The first batch was set free near Wood Canyon, and second was released in an area near Tule Wells and Orange Butte. Water catchments were built near these areas earlier this year to prepare for the sheep release.

All 31 sheep were fitted with radio telemetry collars, and the herd will be closely monitored to learn about their movements, mortality, reproductive success, and utilization on water developments. Monitoring will also help identify lambing, nursery band and other critical uses areas and will help researcher evaluate the "mini-release" concept of transplanting.

TRAGIC LOSS

Wildlife conservation lost a good friend last October 6th when Don Landells lost control of his helicopter and crashed during a sheep survey in California. Also killed in the accident was Jim Bicket, a BLM biologist.

Don Landells had done countless thousands of hours of helicopter work in the desert sheep management program in California.

The crash occurred in the Clark Mountains in the Mojave Desert where the "Society for Conservation of Bighorn Sheep" is planning a waterhole project to commemorate the loss of these two men. The Guzzler Project will take place June 6th & 7th. For more information contact:

Society for Conservation of Bighorn Sheep
3113 Mesaloe Lane
Pasadena, CA 91107
(818) 794-7680

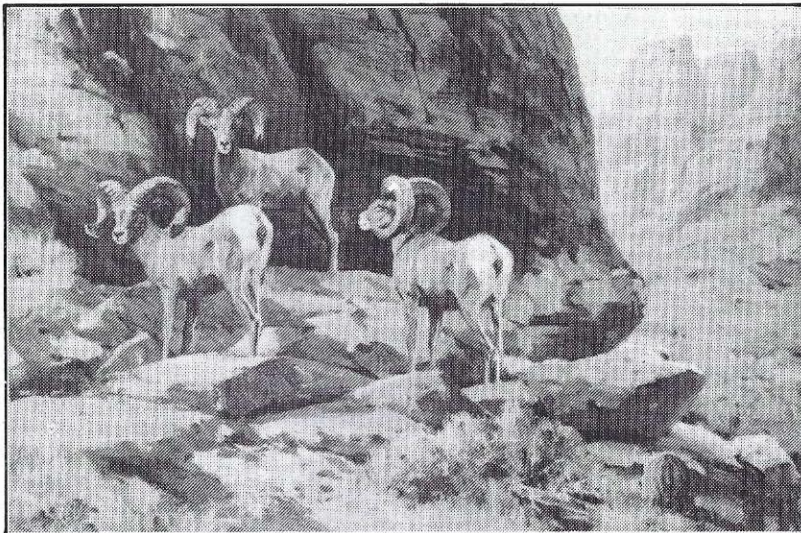
1986 HUNT STATS

Name	Unit	Curl (Inches)		Base (Inches)		Spread	Growth Rings	Arizona Score	**Green Score
		Left	Right	Left	Right				
David H. Neighbor*	15A&BE	31 5/8	31	12 7/8	13	22	10	88 4/8	146 7/8
Rolano R. Griffin	15BW	31 5/8	35 7/8	15	14 7/8	24	8	97 3/8	163 6/8
John M. Schachtner	15BW	32 5/8	28 1/8	14 3/8	14 4/8	28	4	89 5/8	144 4/8
Henry Knuck	15BW	32 4/8	33 5/8	14 6/8	14 6/8	19	6	95 5/8	167 5/8
Patricia S. Redburn	15BW	31 3/8	26 4/8	14 2/8	14	23 2/8	5	86 1/8	143 7/8
Dan M. Eckstein	15BW	35 4/8	29 4/8	15 1/8	14 5/8	28	12	94 6/8	165 2/8
John M. McLaughlin	15BW	31 1/8	31 1/8	16	15 6/8	18 5/8	4	94	153 6/8
Bob L. Loewenstein	15BW	34 4/8	33 4/8	14 2/8	14 2/8	23	8	94 4/8	164
Glen C. Dickens	15C	35 5/8	36 6/8	15	15 4/8	24 4/8	7	102 7/8	172 5/8
Gary L. Steinmann	15C	33 4/8	34	15 4/8	15 2/8	23 5/8	7	98 2/8	166 4/8
Rube S. Wells	15C	33 4/8	33 4/8	14 4/8	14 7/8	27 4/8	10	96 3/8	166 4/8
Louis R. Lane	15C	32 7/8	31 3/8	15	14 3/8	20 6/8	8	93 5/8	166
Kenneth R. Harkey	15C	30 1/8	30 4/8	14 4/8	14	23 3/8	6	89 1/8	150 3/8
William D. Chapman	15C	33 1/8	34 2/8	14 5/8	14 6/8	26 2/8	8	94 6/8	164 1/8
Jack A. Van Scoik	15C	33 4/8	33 7/8	15 6/8	15 6/8	21	6	98 7/8	171 3/8
Mark W. White	15C	34 1/8	30 6/8	14 5/8	14 4/8	25	7	94	160 7/8
William J. Mathot Sr.	15C	25 4/8	25 7/8	15	14 4/8	25 6/8	3	80 7/8	125 7/8
William J. Mathot Jr.*	15C	29 5/8	30	15 6/8	15 4/8	24	6	90 7/8	157 1/8
Gene S. Majors	15D	32 3/8	32 3/8	14 5/8	14 6/8	27 2/8	10	94 1/8	159 4/8
Dennis L. Stoyer	15D	31	30 6/8	15 2/8	15 4/8	23	6	92 4/8	160
Phillip C. Thurston	15D	30	31	15	15	27 6/8	6	91	158 5/8
Wade C. McElwain	15D	34 3/8	33 2/8	14 4/8	15	21 4/8	7	97 1/8	165 1/8
Helen S. Stone	22	32 2/8	29 4/8	15 6/8	15 4/8	20 2/8	6	93	160
Walter E. Sherman	27	37 1/8	34	14 3/8	14 3/8	22 2/8		99 7/8	168 1/8
Peter A. Inorio	31	34	34	16	16 3/8	22	6	100 3/8	169 2/8
Beverly M. Nuessle	31	39 2/8	39 4/8	15 6/8	15 6/8	22 4/8	8	110 2/8	184 4/8
Bob Christy	33	35 4/8	36	16 6/8	16 6/8	21	8	105	179 4/8
Vern Russell	39	32 6/8	31 3/8	14 5/8	14 3/8	18 1/8	6	93 1/8	147 1/8
Leonard Hoover	40B	31 1/8	31 2/8	14 3/8	14 2/8	20 2/8	8	91	156 5/8
Ronald J. Wood	41	27 7/8	27	13 6/8	14	19 4/8	4	82 5/8	130 1/8
Ben C. Williams	41	32 6/8	34 1/8	14 1/8	14 2/8	20 7/8	10	95 2/8	169 1/8
John E. Vaughan	43AB	29	29	15	14 4/8	20	5	87 4/8	136 7/8
Julian J. Gutierrez	43AB	33 4/8	33	13 6/8	13 1/8	21 3/8	12	93 3/8	156
Glenn D. Myrick	44BN	29 7/8	38 1/8	13 7/8	13 6/8	21 4/8	10	95 5/8	163
John T. Behrns*	44BN	34 5/8	32 3/8	13 6/8	13 1/8	21 4/8	11	93 7/8	153 5/8
Alfred E. Delre	44BN	35 1/8	34 6/8	14 1/8	14 2/8	24	10	98 2/8	168 1/8
Randy Knutson	44BS	29 6/8	27 6/8	13 4/8	13 3/8	18 4/8	4	84 3/8	140 6/8
Lawrence L. Hetrick	44BS	31 4/8	29 3/8	13 6/8	13 4/8	20 2/8	6	88 1/8	150 3/8
Robert S. Cooper	44BS	27 3/8	31 4/8	14 5/8	14 7/8	20 6/8	5	88 3/8	148 3/8
Leland S. Speakes Jr.*	45A	32 5/8	32 5/8	13 6/8	13 7/8	22 2/8	9	92 7/8	163
Gary S. Sitton*	45A	34 3/8	33 4/8	14 3/8	14 3/8	21 7/8	7	96 5/8	166 3/8
Charles M. Marsalla II	45AS	32 6/8	32 7/8	15 5/8	15 4/8	20 2/8	5	96 6/8	167 3/8
Peter J. Reardon	45AS	31 3/8	31	15 1/8	15 1/8	22 3/8	10	92 5/8	164 3/8
Sean C. Danna	45AS	31 4/8	32 3/8	14 3/8	14 4/8	19	9	92 6/8	162 1/8
Bryan L. Rogers	45AS	36 6/8	33 7/8	15 6/8	15 5/8	19 1/8	8	102	172 5/8
Ted R. McNeely*	45B	34 2/8	36 3/8	15 1/8	15 1/8	24 1/8	9	100 7/8	174 3/8
Jon L. Nickerson	45B	31 4/8	31 4/8	14 1/8	14 1/8	20	6	91 2/8	157
Sydney Palmer	45C	32 3/8	32 1/8	14 4/8	14 6/8	20 4/8	10	93 6/8	161 6/8
James E. Del Re	45C	34 7/8	34	14 4/8	14 4/8	19 3/8	8	97 7/8	165 5/8
Albert R. Dominquez	45C	32 6/8	32	14 4/8	14 1/8	21	5	93 3/8	151 2/8
Kevin Harris	46A	33	31	14 6/8	14 7/8	19	7	93 3/8	160 6/8
Don Parks Jr.	46A	35 5/8	35 2/8	15 1/8	15 2/8	18 4/8	9	101 2/8	174 5/8
Ray C. Gifford	46B	31 6/8	32 2/8	14 6/8	14 6/8	18	7	93 4/8	158
Joe L. King	46B	32 2/8	32 3/8	15	15	22 2/8	7	94 5/8	163 3/8
Robert M. Gray (R)	44B	33 2/8	35 2/8	15 6/8	16	21 4/8	10	100 2/8	172 6/8
Dennis Hankerson (A)	45AB	35	33 6/8	14 4/8	14 6/8	21 6/8	8	98	164 6/8
Min.		25 5/8	25 7/8	12 7/8	13	18	3	80 7/8	125 7/8
Max.		39 2/8	39 4/8	16 6/8	16 6/8	28	12	110 2/8	184 4/8
Avg.		32 5/8	32 3/8	14 6/8	14 6/8	22	7.4	94 4/8	160 2/8

* Non-Resident
(R) Raffle
(A) Auction

ARIZONA DESERT BIGHORN SHEEP SOCIETY LIMITED EDITION PRINT

One Hundred Ten in the Shade by Ken Carlson



The Arizona Desert Bighorn Sheep Society and its 600 members are dedicated to increasing the population of the desert bighorn sheep within Arizona. Since the Society's beginning in 1967, the Society has developed ninety-two new water sources in either existing or historic sheep habitat. The development of these water sources represents the donation of over 80,000 hours of labor by sheep enthusiasts. The Society has received fourteen state and national awards for its conservation efforts from organizations such as the National Wildlife Federation, the Desert Bighorn Council, and the Foundation for North American Wild Sheep.

Since 1980, when the Society began to actively pursue fund raising, over \$504,000 has been raised for sheep management projects in Arizona. As a result, fourteen transplant herds have been established that have a total population of 880 sheep. Prior to this financial support, only 71 desert bighorns had been transplanted in Arizona.

These accomplishments are primarily the result of support from sportsmen who understand and appreciate the opportunity to participate in this successful program. The continued increase in the desert bighorn population and increases in sheep hunting opportunities in Arizona require this continued support. Through the generous contribution of Collectors Covey and Ken Carlson, one hundred percent of the funds raised from the sale of these prints will be utilized to continue these programs.

Ken Carlson is one of the world's leading wildlife artists. His work has been featured in Sports Afield, Sporting Classics, Midwest Art, and Southwest Art. His art has been utilized by such prestigious conservation organizations as the Boone and Crocket Club, The Foundation for North American Wild Sheep, The Ruffed Grouse Society, and The National Wild Turkey Foundation.

"One Hundred Ten in the Shade" is now available in a signed and numbered limited edition of 1,000; image size 16½" x 25". The print will be \$100.

One Hundred Ten in the Shade

<p>QTY: _____</p> <p>_____ One Hundred Ten in the Shade by Ken Carlson</p> <p style="text-align: right;">Postage/Handling \$6. _____</p> <p style="text-align: right;">TOTAL AMOUNT _____</p> <p style="text-align: center; margin-top: 20px;">Make checks or money orders payable to Arizona Desert Bighorn Sheep Society Please mail remittance with this order to:</p> <p style="text-align: center; margin-top: 10px;">Arizona Desert Bighorn Sheep Society 3602 East Campbell • Phoenix, AZ 85018 • (602) 957-0773</p>	<p>PRICE</p> <p>\$100. _____</p>	<p>ORDERED BY: Please print _____ Date _____</p> <p>Checks and credit cards will be processed in order received. We will be happy to accept your personal check or, if you prefer, your <input type="checkbox"/> MasterCard or <input type="checkbox"/> Visa.</p> <p>Card Number _____</p> <p>Expiration Date _____</p> <p>Signature _____</p> <p>Name _____</p> <p>Address _____</p> <p>City _____ State _____ Zip _____</p> <p>Daytime Phone _____</p>
--	----------------------------------	--

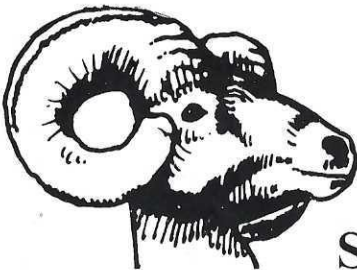
THE RAM'S HORN

P.O. BOX 5241
PHOENIX, ARIZONA 85010



BH000848A 8612 8335651
MATTHEW DOMINY
1206 W LOUGHLIN
CHANDLER AZ 85224

ADDRESS CORRECTION REQUESTED



Send Pictures!

Had a successful hunt???? Send us an article, along with pictures, and we will print them in the Rams Horn.

REWARD Report Wildlife Violations

The ADBSS offers a \$1,000 Reward for information leading to the arrest and conviction of anyone poaching bighorn sheep in Arizona.

CALL: 1-800-352-0700

TRINKETS

Arizona Bighorn Sheep Society shirts, books, Koozie cups, prints and pins are available.

Contact Kriss Miller, 841-5899

Any member interested in serving on a committee, contact Society President Jim Marquardt 922-7220 or 996-1997.

MEMBERSHIP INVITATION

Individuals who are interested in promoting the welfare of the Desert Bighorn Sheep and desire to affiliate with an organization dedicated to this purpose may do so by joining the Arizona Bighorn Sheep Society, Inc.

The membership roster of the Society includes conservationists, sportsmen, professional wildlife managers, educators, biologists, photographers and just plain folks all interested in the Arizona Desert Bighorn Sheep.

The Society undertakes an annual program of several (usually 5) major habitat improvement construction projects in cooperation with and under the direction of the State and Federal agencies responsible for management of the Desert Bighorn Sheep.

One of the more important projects of the Society is the conduction of the annual Sheep Clinic training program.

In addition to projects, members of the Society participate in other conservation and game management activities; a special legislative committee of the Society closely watches legislation that may affect the sheep or its habitat and general welfare.

While the opportunities for active participation are numerous, such participation is not a prerequisite for membership. All interested persons are encouraged to join, the Society needs and welcomes your moral and financial support.

MEMBERSHIP APPLICATION

I hereby make application for membership in the Arizona Desert Bighorn Sheep Society, Inc., and enclose my membership donation. DONATIONS ARE TAX DEDUCTIBLE.

New membership prices are as follow:

Regular membership	\$25.00/yr.
Youth membership	\$15.00/yr.
Sustaining membership	\$100.00/yr.
Senior membership	\$15.00/yr.
Lifetime membership	\$500.00

RENEWAL NEW MEMBERS DATE _____

NAME _____ TEL. NO. _____

ADDRESS _____

CITY _____ STATE _____ ZIP _____

Make checks payable to Arizona Desert Bighorn Sheep Society, Inc.
P.O. BOX 5241 • PHOENIX, ARIZONA 85010